

TANK-AXONOMETRIC

TANK COMPONENTS				
No.	Description	Material	Qty	Remarks
1	Water tank	FRP	1	Colour GRAY
2	Manhole Cover	FRP	2	S/S Hinges & Locks
3	Internal Ladder	FRP/SS	2	Height : 2.5m
4	External Ladder	G.I.	2	Height : 2.5m
5	Air vent	PVC	2	Light & Insect Proof 4" Cow Type
6	Flanges	A	2	6" Connection Flange
		B	1	6" Connection Flange
		C	2	2" Connection Flange
		D	1	4" Connection Flange
		E	4	3" Connection Flange
	Elbow	F	1	8" Elbowed Up-Overflow 12" FB
7	Water Level Indicator	C&M	2	Height : 2.5m
8	Vortex Assembly	PVC	2	3' & 6" Vortex plate Assembly
9	Side Man Way	FRP	2	-

- NOTES:
- CAUTIONS
1. Allow a minimum space of 50 cm all around the tank's foundation.
  2. Maximum allowable deflection in concrete foundation = +/- 2mm.
  3. For sizes of items 6, 7, 8, 9 & 10, please refer to catalogue.
  4. FTC will not be held liable if the erection of our water tanks are not made in accordance to the technical requirements of concrete foundation, steel footing and water tank assembly drawings.
  5. Overflow shall be minimum twice the volume of inlet.
  6. Overflow shall flow freely to the ground.
  7. All tanks shall be electrically grounded.

GRP Panel Type Water Tanks			
Seismic Load Kh=0.3G			
Tank size:	(9.67+0.32+3.11)x4.92x8.2 ft High. (2.95+0.1+0.95)x1.5x2.5 m HIGH		
Volume:	15 m <sup>3</sup>	3,960 USG	825 - 2560 Usable USG
Bolts / Nuts:	S/S A4 - 316		
Insulation:	Non-Insulated		

Project Name:

Break Tank

Contractor:

Cougar USA

Consultant:

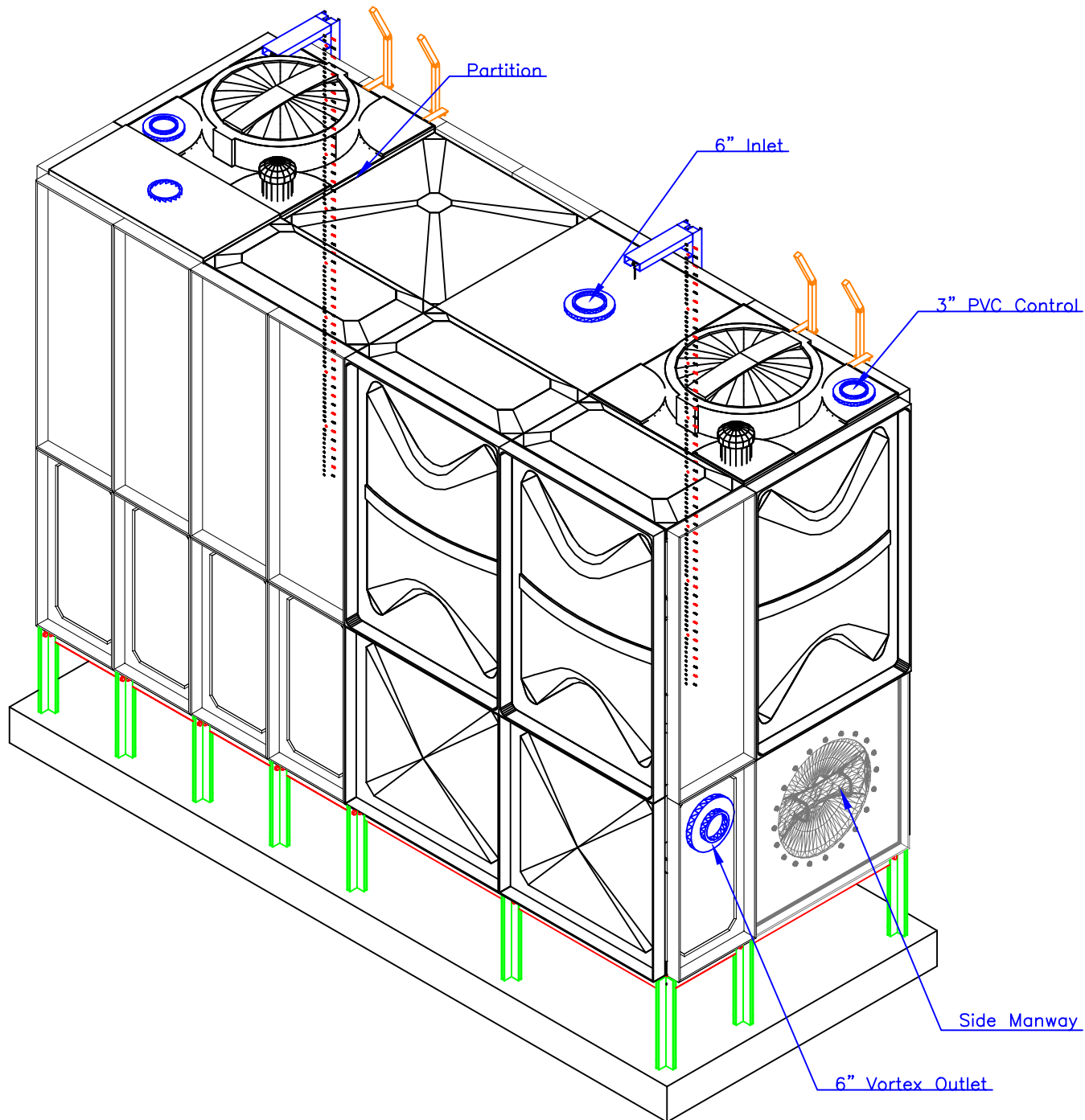
-

Done By:	JC	Reviewed by:	
		Verified by:	-
Revisions			
No.	Issue Date	Description	
1	17Dec'21	NEW	

**FTC** | **FIBER TECHNOLOGY CORPORATION**

Head Office:  
Lorton, Virginia, United States of America

Regional Office:  
Jebel Ali Free Zone, Dubai, U.A.E.



TANK-AXONOMETRIC

# TANK COMPONENTS

No.	Description	Material	Qty	Remarks
1	Water tank	FRP	1	Colour GRAY
2	Manhole Cover	FRP	2	S/S Hinges & Locks
3	Internal Ladder	FRP/SS	2	Height : 2.5m
4	External Ladder	G.I.	2	Height : 2.5m
5	Air vent	PVC	2	Light & Insect Proof 4" Cow Type
6	Flanges	A	2	6" Connection Flange
		B	1	8" Connection Flange
		C	2	2" Connection Flange
		D	1	4" Connection Flange
		E	4	3" Connection Flange
	Elbow	F	1	8" Elbow Up - Overflow 12" FB
7	Water Level Indicator	C&M	2	Height : 2.5m
8	Vortex Assembly	PVC	2	3' & 6" Vortex plate Assembly
9	Side Man Way	FRP	2	-

## NOTES:

- Allow a minimum space of 50 cm all around the tank's foundation.
- Maximum allowable deflection in concrete foundation = +/- 2mm.
- For sizes of items 6, 7, 8, 9 & 10, please refer to catalogue.
- FTC will not be held liable if the erection of our water tanks are not made in accordance to the technical requirements of concrete foundation, steel footing and water tank assembly drawings.
- Overflow shall be minimum twice the volume of inlet.
- Overflow shall flow freely to the ground.
- All tanks shall be electrically grounded.

## CAUTIONS

### GRP Panel Type Water Tanks

Seismic Load  $K_h = 0.3G$

<b>Tank size:</b>	(9.67+0.32+3.11)x4.92x8.2 ft High. (2.95+0.1+0.95)x1.5x2.5 m HIGH		
<b>Volume:</b>	15 m <sup>3</sup>	3,960 USG	825 - 2560 Usable USG
<b>Bolts / Nuts:</b>	S/S A4 - 316		
<b>Insulation:</b>	Non-Insulated		

**Project Name:**

**Break Tank**

**Contractor:**

**Cougar USA**

**Consultant:**

-

Done By:	JC	Reviewed by:	
		Verified by:	-

#### Revisions

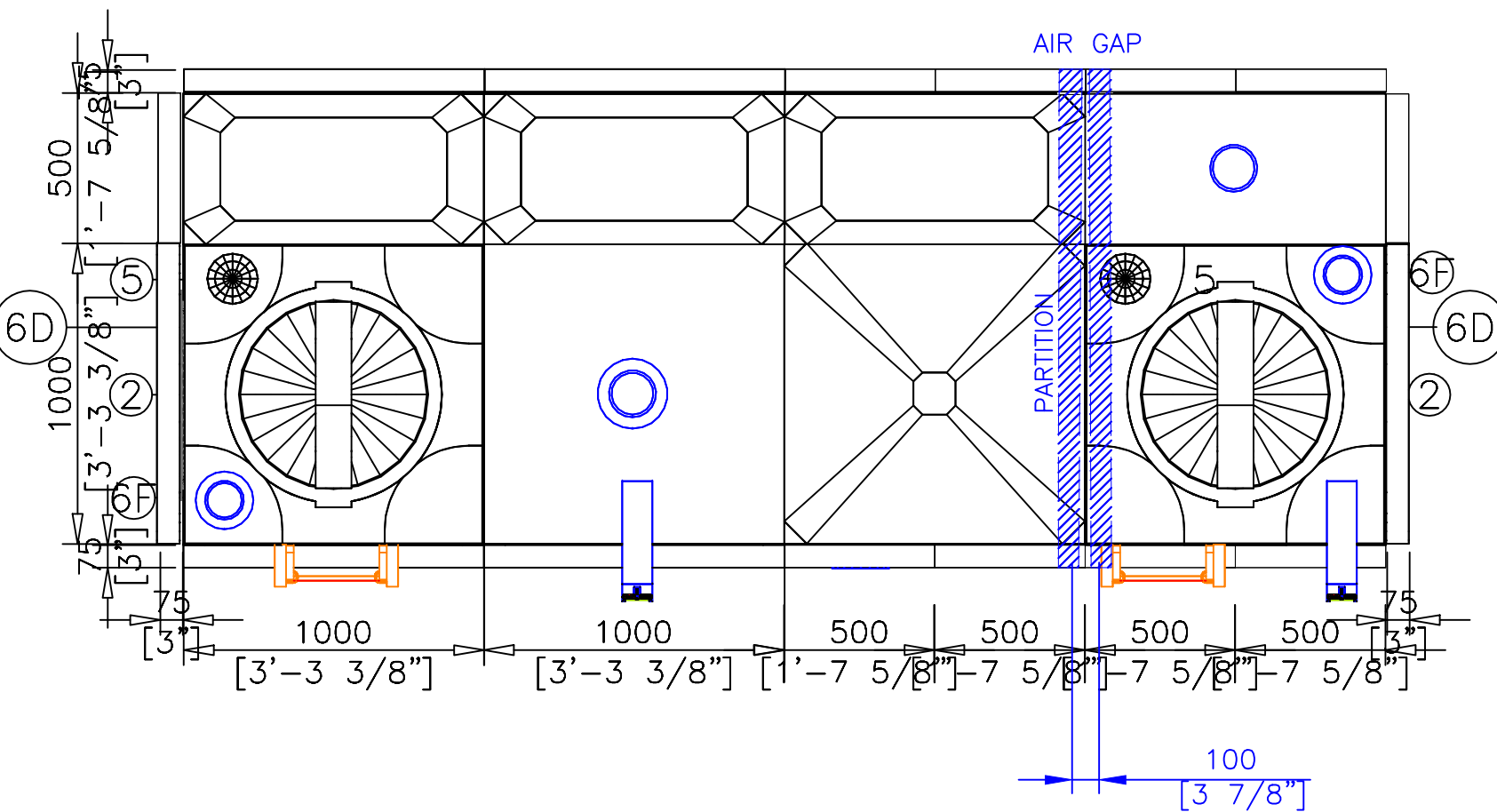
No.	Issue Date	Description
1	17Dec'21	NEW

**FTC** FIBER TECHNOLOGY CORPORATION

Head Office:  
Lorton, Virginia, United States of America

Regional Office:  
Jebel Ali Free Zone, Dubai, U.A.E.





TANK-PLAN

TANK COMPONENTS				
No.	Description	Material	Qty	Remarks
1	Water tank	FRP	1	Colour GRAY
2	Manhole Cover	FRP	2	S/S Hinges & Locks
3	Internal Ladder	FRP/SS	2	Height : 2.5m
4	External Ladder	G.I.	2	Height : 2.5m
5	Air vent	PVC	2	Light & Insect Proof 4" Cow Type
6	Flanges	A	2	6" Connection Flange
		B	1	8" Connection Flange
		C	2	2" Connection Flange
		D	1	4" Connection Flange
		E	4	3" Connection Flange
	Elbow	F PVC	1	8" Elbowed Up - Overflow 12" FB
7	Water Level Indicator	C&M	2	Height : 2.5m
8	Vortex Assembly	PVC	2	5' & 6" Vortex plate Assembly
9	Side Man Way	FRP	2	-

NOTES:		CAUTIONS	
1. Allow a minimum space of 50 cm all around the tank's foundation.			
2. Maximum allowable deflection in concrete foundation = +/- 2mm.			
3. For sizes of items 6, 7, 8, 9 & 10, please refer to catalogue.			
4. FTC will not be held liable if the erection of our water tanks are not made in accordance to the technical requirements of concrete foundation, steel footing and water tank assembly drawings.			
5. Overflow shall be minimum twice the volume of inlet.			
6. Overflow shall flow freely to the ground.			
7. All tanks shall be electrically grounded.			

GRP Panel Type Water Tanks			
Seismic Load Kh=0.3G			
Tank size:	(9.67+0.32+3.11)x4.92x8.2 ft High. (2.95+0.1+0.95)x1.5x2.5 m HIGH		
Volume:	15 m <sup>3</sup>	3,960 USG	825 - 2560 Usable USG
Bolts / Nuts:	S/S A4 - 316		
Insulation:	Non-Insulated		

Project Name:	
Break Tank	
Contractor:	
Cougar USA	
Consultant:	
-	

Done By:	JC	Reviewed by:	
		Verified by:	-

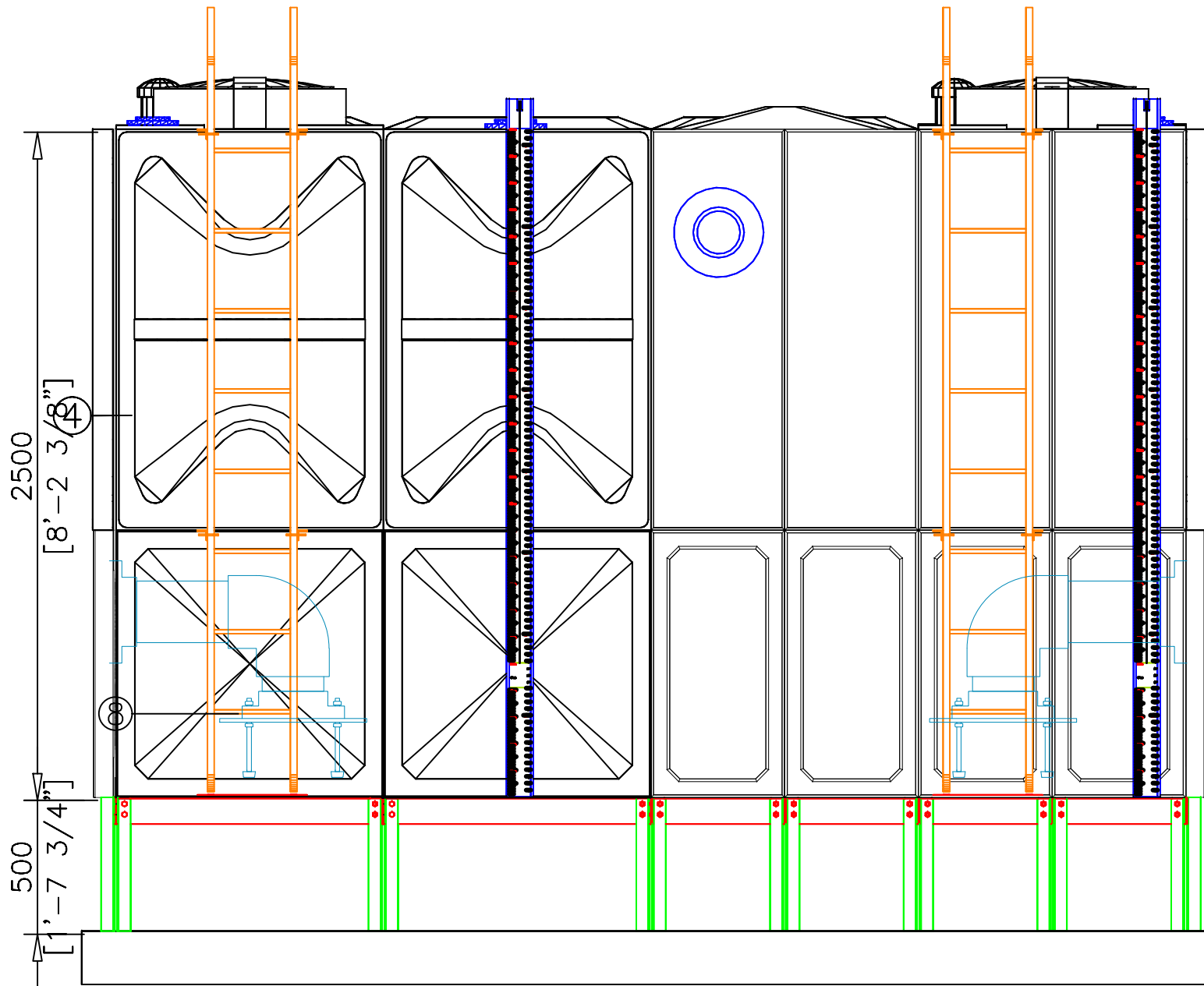
Revisions		
No.	Issue Date	Description
1	17Dec'21	NEW

**FTC** FIBER TECHNOLOGY CORPORATION  
Head Office:  
Lorton, Virginia, United States of America  
Regional Office:  
Jebel Ali Free Zone, Dubai, U.A.E.

Copyright Fiber Technology Corporation



FRONT ELEVATION

#### TANK COMPONENTS

No.	Description	Material	Qty	Remarks
1	Water tank	FRP	1	Colour GRAY
2	Manhole Cover	FRP	2	S/S Hinges & Locks
3	Internal Ladder	FRP/SS	2	Height : 2.5m
4	External Ladder	G.I.	2	Height : 2.5m
5	Air vent	PVC	2	Light & Insect Proof 4" Cow Type
6	Flanges	A	-	8" Connection Flange
		B	-	6" Connection Flange
		C	-	2" Connection Flange
		D	-	4" Connection Flange
		E	-	3" Connection Flange
	Elbow	F	PVC	8" Elbowed Up - Overflow 12" FB
7	Water Level Indicator	C&M	2	Height : 2.5m
8	Vortex Assembly	PVC	2	3' & 6" Vortex plate Assembly
9	Side Man Way	FRP	2	-

#### NOTES:

1. Allow a minimum space of 50 cm all around the tank's foundation.
2. Maximum allowable deflection in concrete foundation = +/- 2mm.
3. For sizes of items 6, 7, 8, 9 & 10, please refer to catalogue.
4. FTC will not be held liable if the erection of our water tanks are not made in accordance to the technical requirements of concrete foundation, steel footing and water tank assembly drawings.
5. Overflow shall be minimum twice the volume of inlet.
6. Overflow shall flow freely to the ground.
7. All tanks shall be electrically grounded.

#### CAUTIONS

#### GRP Panel Type Water Tanks

Seismic Load  $K_h = 0.3G$

Tank size:	(9.67+0.32+3.11)x4.92x8.2 ft High.			
	(2.95+0.1+0.95)x1.5x2.5 m HIGH			
Volume:	15	m <sup>3</sup>	3,960	825 - 2560 USG
Bolts / Nuts:	S/S A4 - 316			
Insulation:	Non-Insulated			

Project Name:

Break Tank

Contractor:

Cougar USA

Consultant:

-

Done By:	JC	Reviewed by:	
		Verified by:	-

#### Revisions

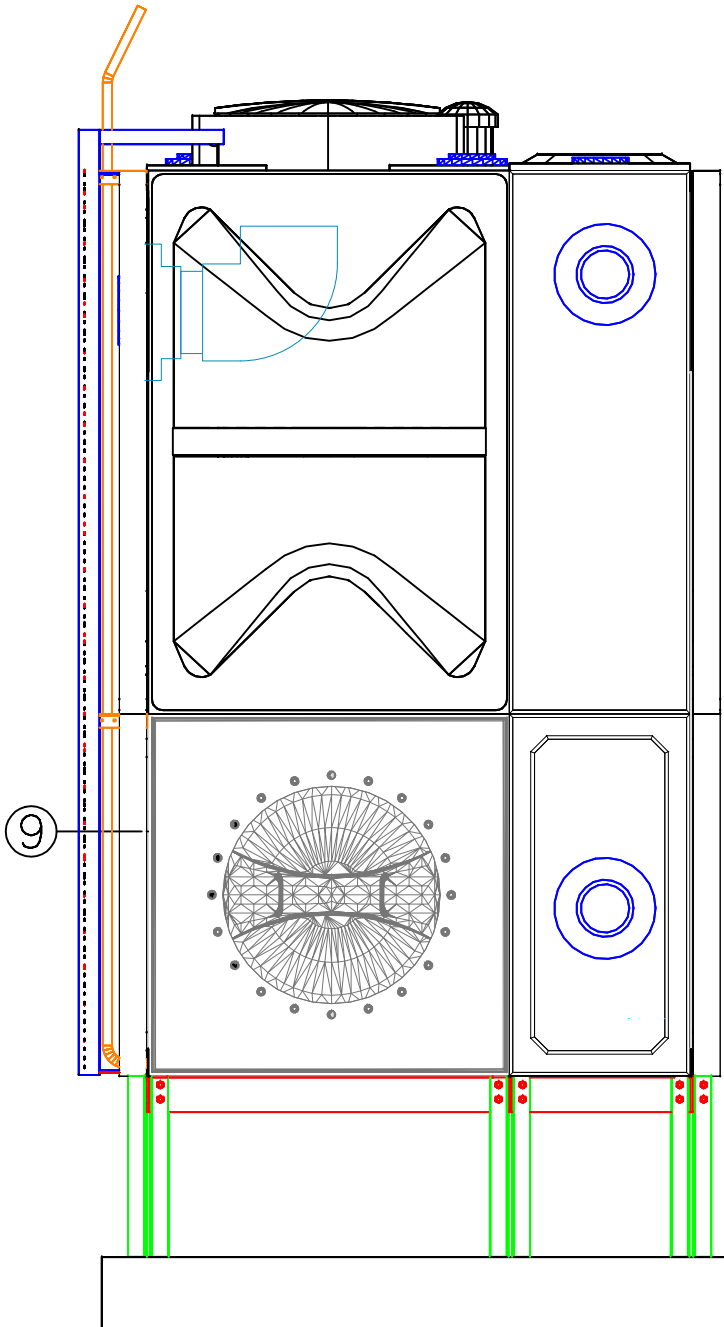
No.	Issue Date	Description
1	17Dec'21	NEW

**FTC** FIBER TECHNOLOGY CORPORATION

Head Office:  
Lorton, Virginia, United States of America

Regional Office:  
Jebel Ali Free Zone, Dubai, U.A.E.

Copyright Fiber Technology Corporation



TANK-RIGHT ELEVATION

# TANK COMPONENTS

No.	Description	Material	Qty	Remarks
1	Water tank	FRP	1	Colour GRAY
2	Manhole Cover	FRP	2	S/S Hinges & Locks
3	Internal Ladder	FRP/SS	2	Height : 2.5m
4	External Ladder	G.I.	2	Height : 2.5m
5	Air vent	PVC	2	Light & Insect Proof 4" Cow Type
6	Flanges	A	2	6" Connection Flange
		B	1	6" Connection Flange
		C	2	2" Connection Flange
		D	1	4" Connection Flange
		E	4	3" Connection Flange
	Elbow	F PVC	1	6" Elbowed Up - Overflow 12" FB
7	Water Level Indicator	C&M	2	Height : 2.5m
8	Vortex Assembly	PVC	2	3' & 6" Vortex plate Assembly
9	Side Man Way	FRP	2	-

## NOTES:

- Allow a minimum space of 50 cm all around the tank's foundation.
- Maximum allowable deflection in concrete foundation = +/- 2mm.
- For sizes of items 6, 7, 8, 9 & 10, please refer to catalogue.
- FTC will not be held liable if the erection of our water tanks are not made in accordance to the technical requirements of concrete foundation, steel footing and water tank assembly drawings.
- Overflow shall be minimum twice the volume of inlet.
- Overflow shall flow freely to the ground.
- All tanks shall be electrically grounded.

## CAUTIONS

### GRP Panel Type Water Tanks

Seismic Load Kh=0.3G

<b>Tank size:</b>	(9.67+0.32+3.11)x4.92x8.2 ft High. (2.95+0.1+0.95)x1.5x2.5 m HIGH		
<b>Volume:</b>	15 m <sup>3</sup>	3,960 USG	825 - 2560 Usable USG
<b>Bolts / Nuts:</b>	S/S A4 - 316		
<b>Insulation:</b>	Non-Insulated		

### Project Name:

Break Tank

### Contractor:

Cougar USA

### Consultant:

-

Done By:	JC	Reviewed by:	
		Verified by:	-

### Revisions

No.	Issue Date	Description
1	17Dec'21	NEW

**FTC** FIBER TECHNOLOGY CORPORATION

Head Office:  
Lorton, Virginia, United States of America

Regional Office:  
Jebel Ali Free Zone, Dubai, U.A.E.