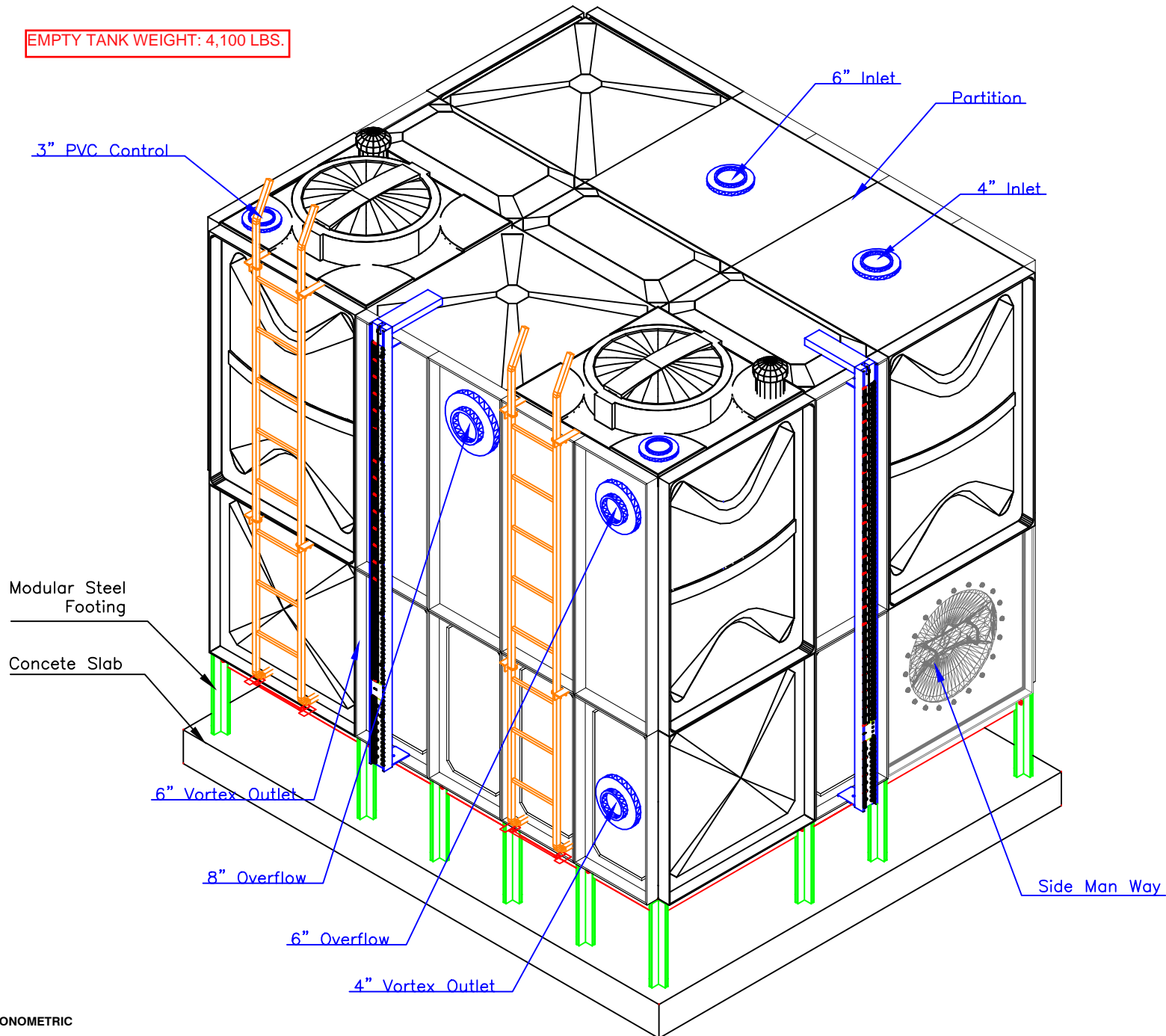


EMPTY TANK WEIGHT: 4,100 LBS.



TANK-AXONOMETRIC

TANK COMPONENTS

No.	Description	Material	Qty	Remarks
1	Water tank	FRP	1	Colour GRAY
2	Manhole Cover	FRP	2	S/S Hinges & Locks
3	Internal Ladder	FRP/SS	2	Height : 2.5m
4	External Ladder	G.I.	2	Height : 2.5m
5	Air vent	PVC	2	Light & Insect Proof 4" Cow Type
6	Flanges	Class 150	2	4" SS 304 Connection Flange
		B	1	8" Overflow
		C	2	8" Steel Threaded Flange
		D	2	2" Steel Threaded Flange & 2" SS 304
		E	1	6" Overflow
		F	2	3" PVC Connection Flange
7	Water Level Indicator	C&M	2	Height : 2.5m
8	Vortex Assembly	FRP	2	4" & 6" Vortex plate Assembly
9	Side Man Way	FRP	2	-

NOTES:

- Allow a minimum space of 50 cm all around the tank's foundation.
- Maximum allowable deflection in concrete foundation = +/- 2mm.
- For sizes of items 6, 7, 8, 9 & 10, please refer to catalogue.
- FTC will not be held liable if the erection of our water tanks are not made in accordance to the technical requirements of concrete foundation, steel footing and water tank assembly drawings.
- Overflow shall be minimum twice the volume of inlet.
- Overflow shall flow freely to the ground.
- All tanks shall be electrically grounded.

CAUTIONS

GFRP Panel Type Water Tanks

Seismic Load $K_h = 0.3G$

Tank size: (6.39+0.32+3.11)x8.2x8.2 ft High.
(1.95+0.1+0.95)x2.5x2.5 m HIGH

Volume: 18.75 m³ 4953. USG

Bolts / Nuts: S/S A4 - 316

Insulation: Non-Insulated

Project Name:

Elmira at Myrtle
San Antonio

Contractor:

Cougar USA

Consultant:

-

Done By: JC

Reviewed by:

Verified by: -

Revisions

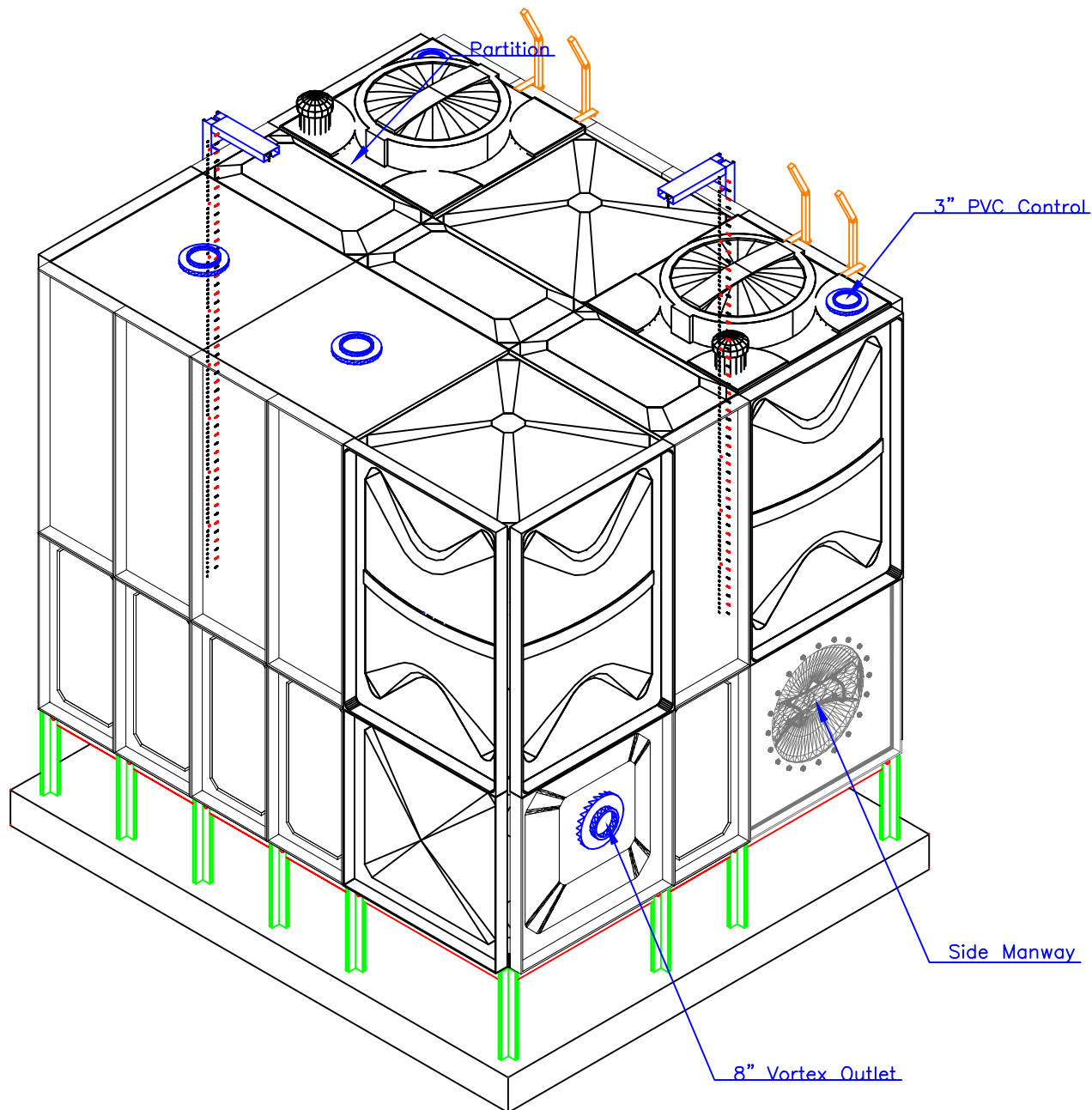
No.	Issue Date	Description
1	30Oct20	NEW

FTC FIBER TECHNOLOGY CORPORATION

Head Office:
Lorton, Virginia, United States of America

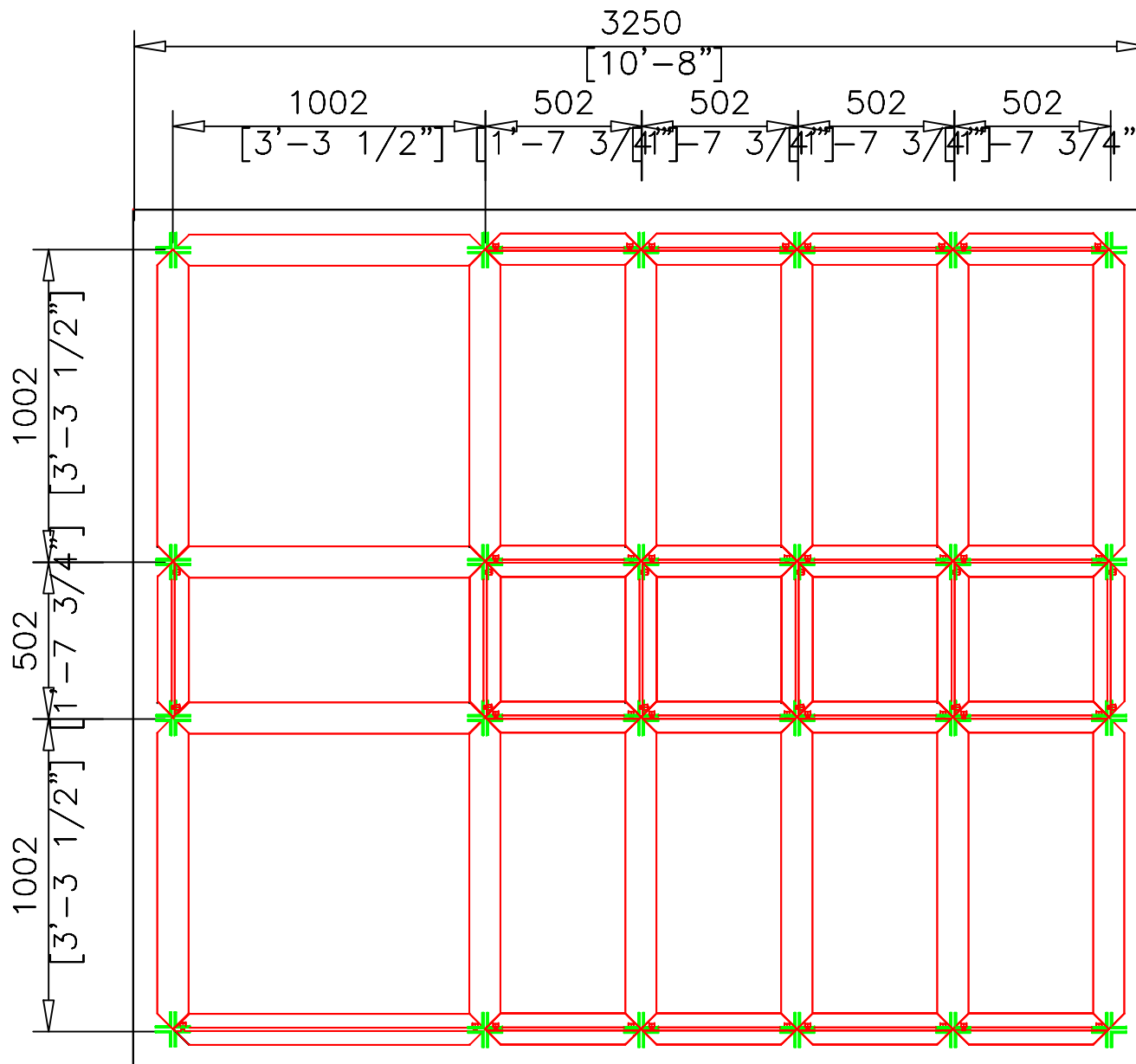
Regional Office:
Jebel Ali Free Zone, Dubai, U.A.E.

Copyright Fiber Technology Corporation



TANK-AXONOMETRIC

TANK COMPONENTS				
No.	Description	Material	Qty	Remarks
1	Water tank	FRP	1	Colour GRAY
2	Manhole Cover	FRP	2	S/S Hinges & Locks
3	Internal Ladder	FRP/SS	2	Height : 2.5m
4	External Ladder	G.I.	2	Height : 2.5m
5	Air vent	PVC	2	Light & Insect Proof 4" Cowl Type
6	Flanges	Class 150	2	4" SS 304 Connection Flange
		B	-	1 6" Overflow
		C	Class 150	2 6" Steel Threaded Flange
		D	Class 150	2 2" Steel Threaded Flange & 2" SS 304
		E	-	1 6" Overflow
		F	PVC	2 3" PVC Connection Flange
7	Water Level Indicator	C&M	2	Height : 2.5m
8	Vortex Assembly	FRP	2	4' & 6" Vortex plate Assembly
9	Side Man Way	FRP	2	-
NOTES:				
CAUTIONS				
1. Allow a minimum space of 50 cm all around the tank's foundation.				
2. Maximum allowable deflection in concrete foundation = +/- 2mm.				
3. For sizes of items 6, 7, 8, 9 & 10, please refer to catalogue.				
4. FTC will not be held liable if the erection of our water tanks are not made in accordance to the technical requirements of concrete foundation, steel footing and water tank assembly drawings.				
5. Overflow shall be minimum twice the volume of inlet.				
6. Overflow shall flow freely to the ground.				
7. All tanks shall be electrically grounded.				
GRP Panel Type Water Tanks				
Seismic Load Kh=0.3G				
Tank size:	(6.39+0.32+3.11)x8.2x8.2 ft High. (1.95+0.1+0.95)x2.5x2.5 m HIGH			
Volume:	18.75 m ³	4953.	USG	
Bolts / Nuts:	S/S A4 - 316			
Insulation:	Non-Insulated			
Project Name:				
Elmira at Myrtle San Antonio				
Contractor:				
Cougar USA				
Consultant:				
-				
Done By:	JC	Reviewed by:		
		Verified by:	-	
Revisions				
No.	Issue Date	Description		
1	30Oct'20	NEW		
FTC FIBER TECHNOLOGY CORPORATION				
Head Office:				
Lorton, Virginia, United States of America				
Regional Office:				
Jebel Ali Free Zone, Dubai, U.A.E.				
Copyright Fiber Technology Corporation				



STEEL FOOTING-PLAN

TANK COMPONENTS

No.	Description	Material	Qty	Remarks
1	Water tank	FRP	1	Colour GRAY
2	Manhole Cover	FRP	2	S/S Hinges & Locks
3	Internal Ladder	FRP/SS	2	Height : 2.5m
4	External Ladder	G.I.	2	Height : 2.5m
5	Air vent	PVC	2	Light & Insect Proof 4" Cow Type
6	Flanges	Class 150	2	4" SS 304 Connection Flange
		B	1	6" Overflow
		C	2	8" Steel Threaded Flange
		D	2	2" Steel Threaded Flange & 2" SS 304
		E	1	6" Overflow
		F	2	3" PVC Connection Flange
7	Water Level Indicator	C&M	2	Height : 2.5m
8	Vortex Assembly	FRP	2	4" & 6" Vortex plate Assembly
9	Side Man Way	FRP	2	-

NOTES:

- Allow a minimum space of 50 cm all around the tank's foundation.
- Maximum allowable deflection in concrete foundation = +/- 2mm.
- For sizes of items 6, 7, 8, 9 & 10, please refer to catalogue.
- FTC will not be held liable if the erection of our water tanks are not made in accordance to the technical requirements of concrete foundation, steel footing and water tank assembly drawings.
- Overflow shall be minimum twice the volume of inlet.
- Overflow shall flow freely to the ground.
- All tanks shall be electrically grounded.

CAUTIONS

GRP Panel Type Water Tanks

Seismic Load $K_h = 0.3G$

Tank size: (6.39+0.32+3.11)x8.2x8.2 ft High.
(1.95+0.1+0.95)x2.5x2.5 m HIGH

Volume: 18.75 m³ 4953. USG

Bolts / Nuts: S/S A4 - 316

Insulation: Non-Insulated

Project Name:

Elmira at Myrtle
San Antonio

Contractor:

Cougar USA

Consultant:

-

Done By: JC

Reviewed by:

Verified by: -

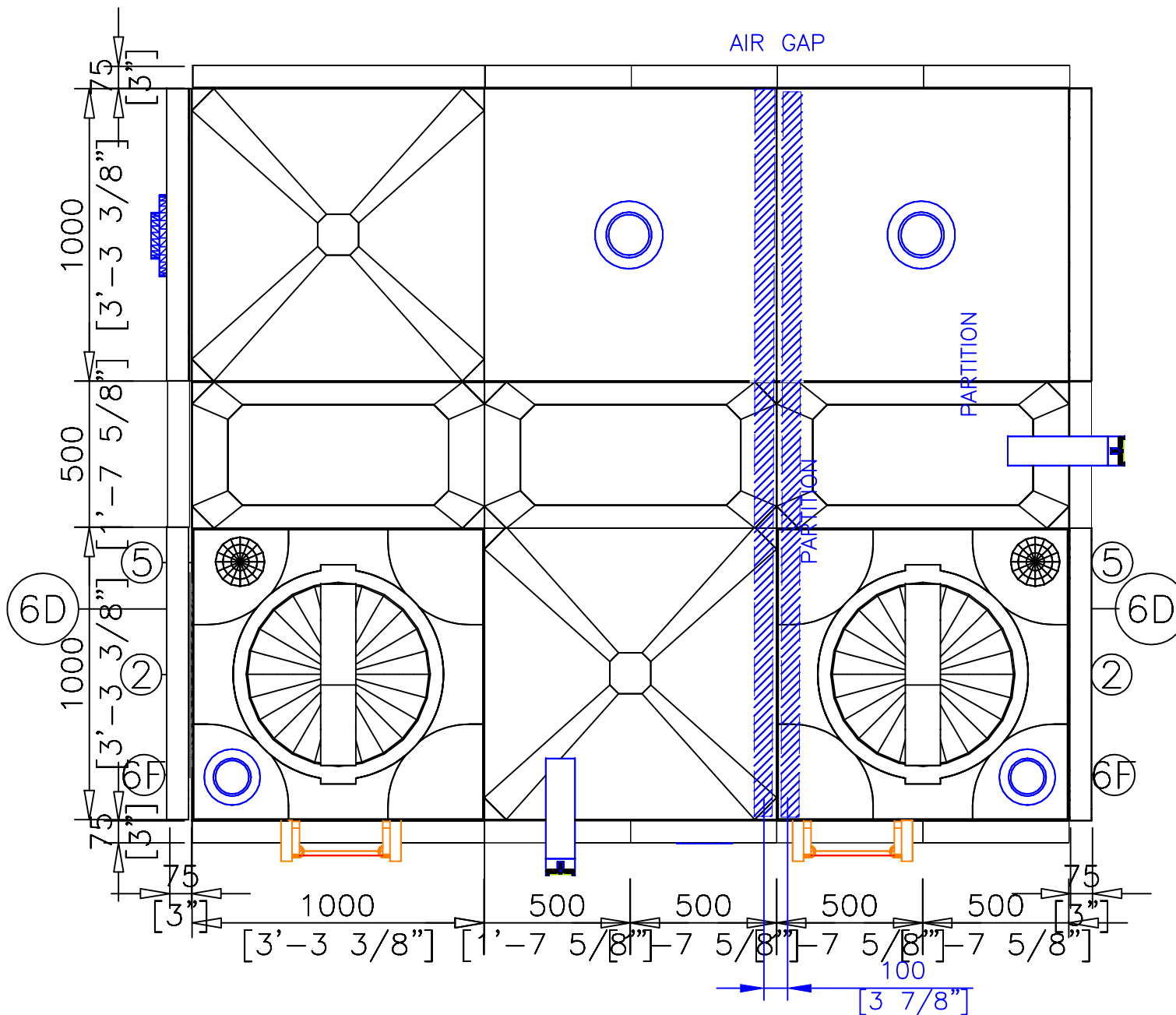
Revisions

No.	Issue Date	Description
1	30Oct20	NEW

FTC FIBER TECHNOLOGY CORPORATION

Head Office:
Lorton, Virginia, United States of America

Regional Office:
Jebel Ali Free Zone, Dubai, U.A.E.



TANK COMPONENTS				
No.	Description	Material	Qty	Remarks
1	Water tank	FRP	1	Colour GRAY
2	Manhole Cover	FRP	2	S/S Hinges & Locks
3	Internal Ladder	FRP/SS	2	Height : 2.5m
4	External Ladder	G.I.	2	Height : 2.5m
5	Air vent	PVC	2	Light & Insect Proof 4" Cow Type
6	Flanges	Class 150	2	4" SS 304 Connection Flange
		B	1	6" Overflow
		C	2	8" Steel Threaded Flange
		D	2	2" Steel Threaded Flange & 2" SS 304
		E	1	6" Overflow
		F	2	3" PVC Connection Flange
7	Water Level Indicator	C&M	2	Height : 2.5m
8	Vortex Assembly	FRP	2	4' & 6' Vortex plate Assembly
9	Side Man Way	FRP	2	-

NOTES:		CAUTIONS	
1. Allow a minimum space of 50 cm all around the tank's foundation.		2. Maximum allowable deflection in concrete foundation = +/- 2mm.	
3. For sizes of items 6, 7, 8, 9 & 10, please refer to catalogue.		4. FTC will not be held liable if the erection of our water tanks are not made in accordance to the technical requirements of concrete foundation, steel footing and water tank assembly drawings.	
5. Overflow shall be minimum twice the volume of inlet.		6. Overflow shall flow freely to the ground.	
7. All tanks shall be electrically grounded.			

GRP Panel Type Water Tanks	
Seismic Load Kh=0.3G	
Tank size:	(6.39+0.32+3.11)x8.2x8.2 ft High. (1.95+0.1+0.95)x2.5x2.5 m HIGH
Volume:	18.75 m ³ 4953. USG
Bolts / Nuts:	S/S A4 - 316
Insulation:	Non-Insulated

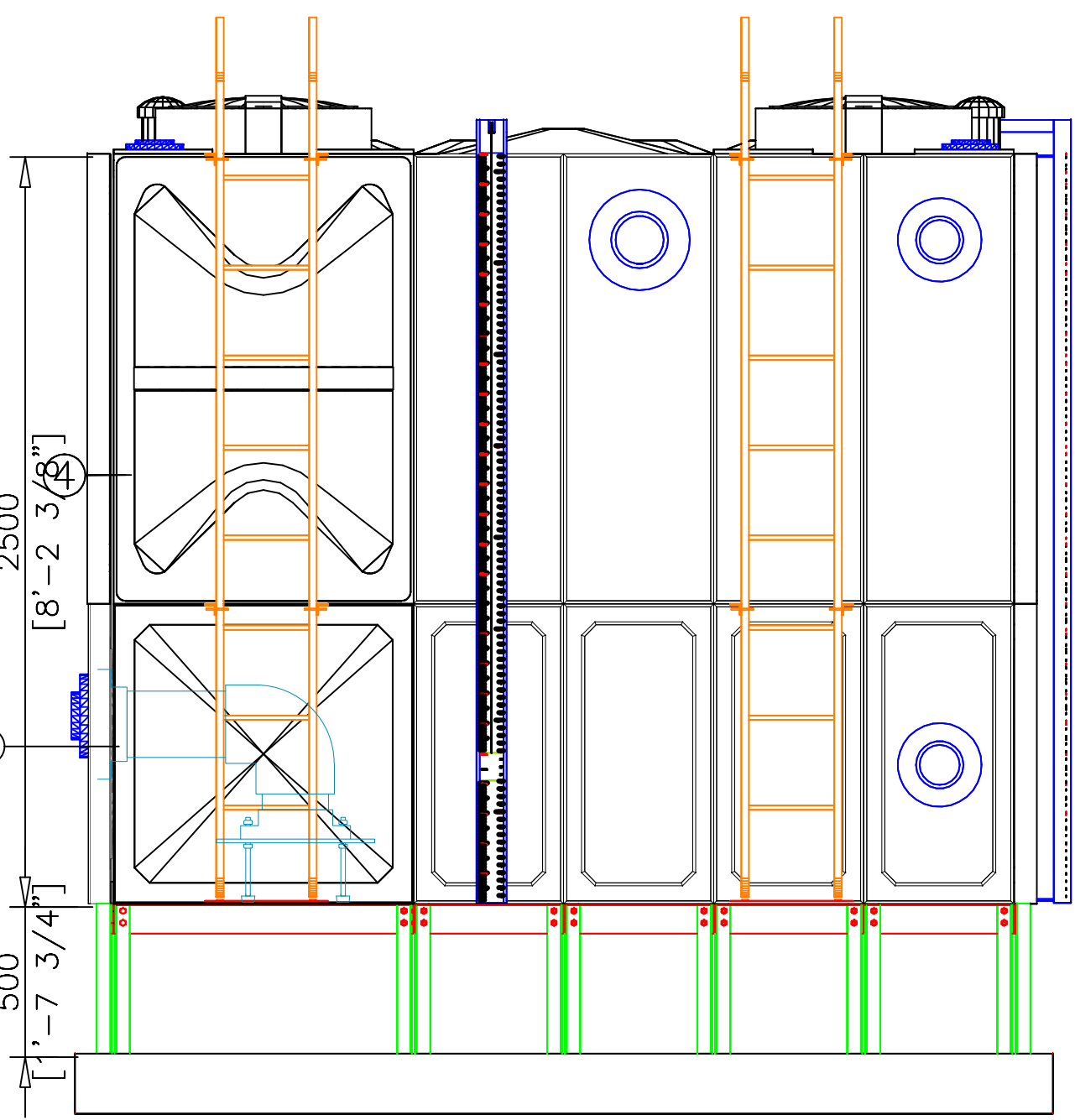
Project Name:	Elmira at Myrtle San Antonio
Contractor:	Cougar USA
Consultant:	-

Done By:	JC	Reviewed by:	
Verified by:		Verified by:	-

Revisions		
No.	Issue Date	Description
1	30Oct20	NEW

FTC FIBER TECHNOLOGY CORPORATION
Head Office: Lorton, Virginia, United States of America
Regional Office: Jebel Ali Free Zone, Dubai, U.A.E.

Copyright Fiber Technology Corporation



FRONT ELEVATION

TANK COMPONENTS				
No.	Description	Material	Qty	Remarks
1	Water tank	FRP	1	Colour GRAY
2	Manhole Cover	FRP	2	S/S Hinges & Locks
3	Internal Ladder	FRP/SS	2	Height : 2.5m
4	External Ladder	G.I.	2	Height : 2.5m
5	Air vent	PVC	2	Light & Insect Proof 4" Cowl Type
6	Flanges	Class 150	2	4" SS 304 Connection Flange
		B	1	6" Overflow
		C	2	8" Steel Threaded Flange
		D	2	2" Steel Threaded Flange & 2" SS 304
		E	1	6" Overflow
		F	2	3" PVC Connection Flange
7	Water Level Indicator	C&M	2	Height : 2.5m
8	Vortex Assembly	FRP	2	4' & 6" Vortex plate Assembly
9	Side Man Way	FRP	2	-

- NOTES:
- CAUTIONS
1.

2.

3.

4.

5.

6.

7.
- Allow a minimum space of 50 cm all around the tank's foundation.
Maximum allowable deflection in concrete foundation = +/- 2mm.
For sizes of items 6, 7, 8, 9 & 10, please refer to catalogue.
FTC will not be held liable if the erection of our water tanks are not made in accordance to the technical requirements of concrete foundation, steel footing and water tank assembly drawings.
Overflow shall be minimum twice the volume of inlet.
Overflow shall flow freely to the ground.
All tanks shall be electrically grounded.

GRP Panel Type Water Tanks			
Seismic Load Kh=0.3G			
Tank size:	(6.39+0.32+3.11)x8.2x8.2 ft High. (1.95+0.1+0.95)x2.5x2.5 m HIGH		
Volume:	18.75 m ³	4953. USG	
Bolts / Nuts:	S/S A4 - 316		
Insulation:	Non-Insulated		

Project Name:

Elmira at Myrtle
San Antonio

Contractor:

Cougar USA

Consultant:

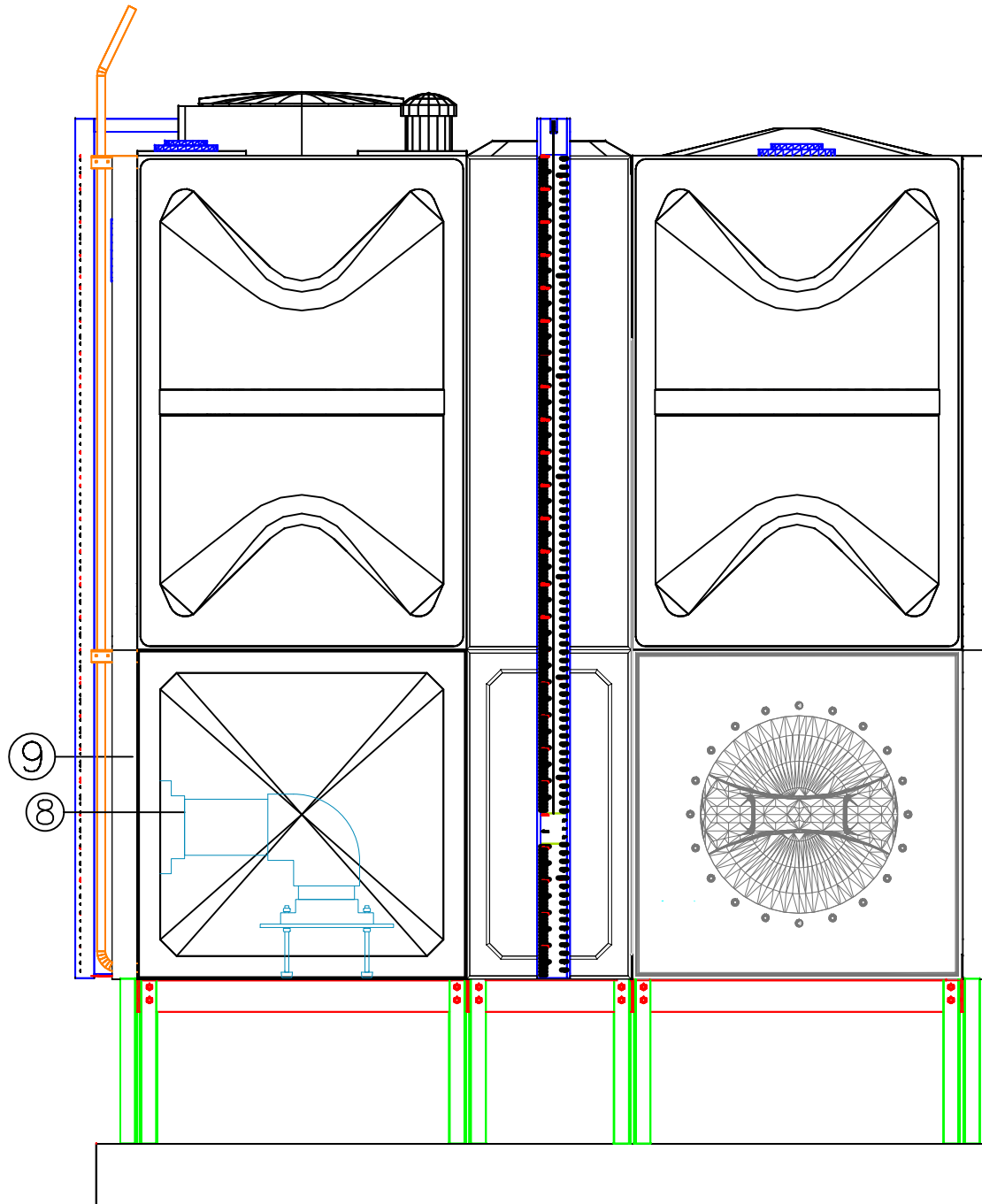
-

Done By:	JC	Reviewed by:	
		Verified by:	-
Revisions			
No.	Issue Date	Description	
1	30Oct20	NEW	

FTC

FIBER TECHNOLOGY CORPORATION

Head Office:
Lorton, Virginia, United States of America
Regional Office:
Jebel Ali Free Zone, Dubai, U.A.E.



TANK-RIGHT ELEVATION

TANK COMPONENTS

No.	Description	Material	Qty	Remarks
1	Water tank	FRP	1	Colour GRAY
2	Manhole Cover	FRP	2	S/S Hinges & Locks
3	Internal Ladder	FRP/SS	2	Height : 2.5m
4	External Ladder	G.I.	2	Height : 2.5m
5	Air vent	PVC	2	Light & Insect Proof 4" Cow Type
6	Flanges	Class 150	2	4" SS 304 Connection Flange
		B	1	6" Overflow
		C	2	8" Steel Threaded Flange
		D	2	2" Steel Threaded Flange & 2" SS 304
		E	1	6" Overflow
		F	2	3" PVC Connection Flange
7	Water Level Indicator	C&M	2	Height : 2.5m
8	Vortex Assembly	FRP	2	4' & 6' Vortex plate Assembly
9	Side Man Way	FRP	2	-

NOTES:

1. Allow a minimum space of 50 cm all around the tank's foundation.
2. Maximum allowable deflection in concrete foundation = +/- 2mm.
3. For sizes of items 6, 7, 8, 9 & 10, please refer to catalogue.
4. FTC will not be held liable if the erection of our water tanks are not made in accordance to the technical requirements of concrete foundation, steel footing and water tank assembly drawings.
5. Overflow shall be minimum twice the volume of inlet.
6. Overflow shall flow freely to the ground.
7. All tanks shall be electrically grounded.

CAUTIONS

GRP Panel Type Water Tanks

Seismic Load Kh=0.3G

Tank size: (6.39+0.32+3.11)x8.2x8.2 ft High.
(1.95+0.1+0.95)x2.5x2.5 m HIGH

Volume: 18.75 m³ 4953. USG

Bolts / Nuts: S/S A4 - 316

Insulation: Non-Insulated

Project Name:

Elmira at Myrtle
San Antonio

Contractor:

Cougar USA

Consultant:

-

Done By: JC

Reviewed by:

Verified by: -

Revisions

No.	Issue Date	Description
1	30Oct20	NEW

FTC FIBER TECHNOLOGY CORPORATION

Head Office:
Lorton, Virginia, United States of America

Regional Office:
Jebel Ali Free Zone, Dubai, U.A.E.