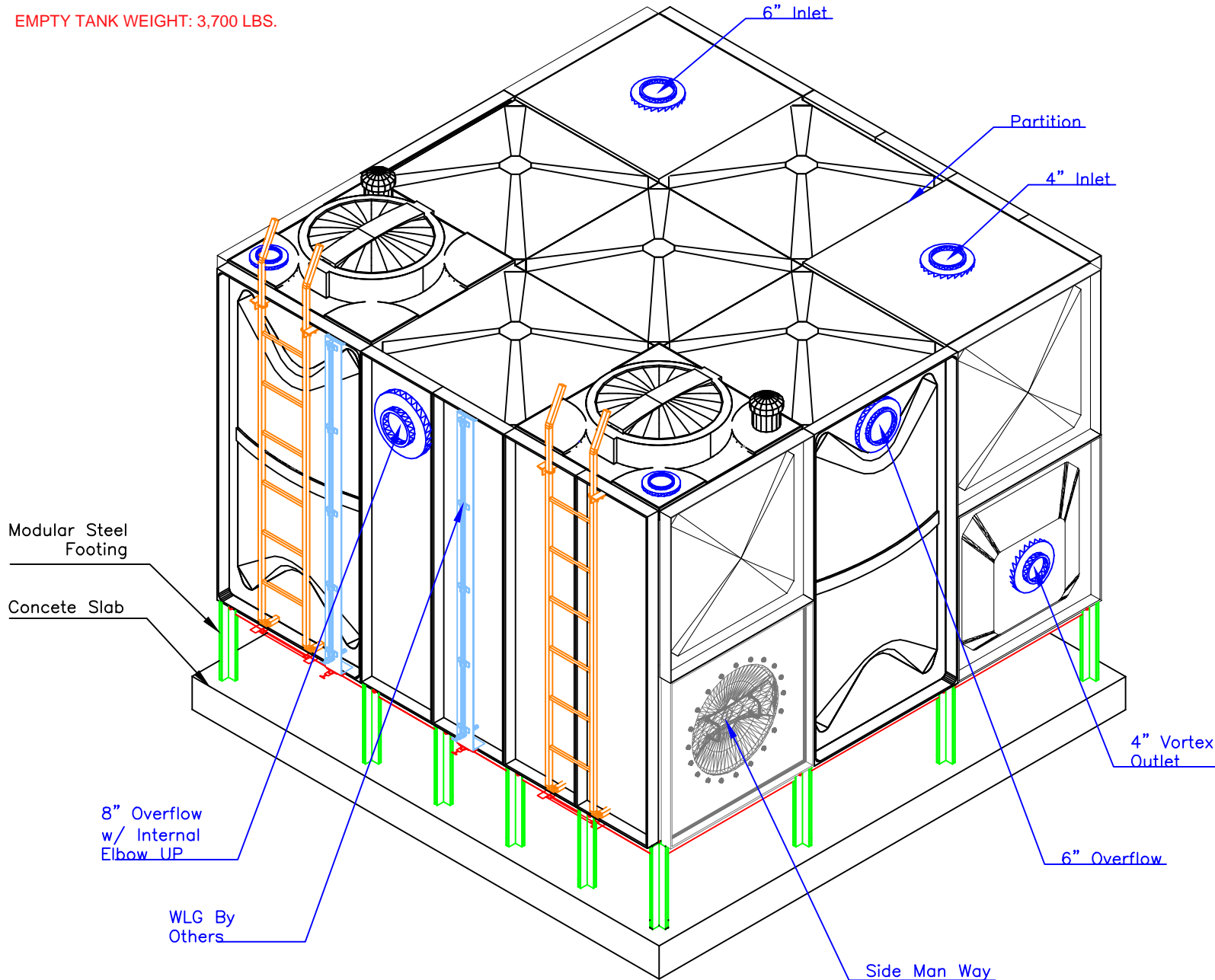


EMPTY TANK WEIGHT: 3,700 LBS.



TANK-AXONOMETRIC

#### TANK COMPONENTS

No.	Description	Material	Qty	Remarks
1	Water tank	FRP	1	Colour GRAY
2	Manhole Cover	FRP	2	S/S Hinges & Locks
3	Internal Ladder	SS	2	Height : 2m
4	External Ladder	G.I.	2	Height : 2m
5	Air vent		2	Light & Insect Proof 4" Cow Type
6	Flange	A	2	2" Connection Flange
		B	2	3" Connection Flange
		C	2	4" Connection Flange
		D	2	6" Connection Flange
		E	1	8" Connection Flange + Elbow UP
11	Water Level Indicator	-	2	Height : 2m BY OTHERS
12	Vortex Assembly	FRP	2	4" & 6" Anti Vortex Plate Assembly
13	Side Man Way	FRP	2	-

#### NOTES:

1. Allow a minimum space of 50 cm all around the tank's foundation.
2. Maximum allowable deflection in concrete foundation = +/- 2mm.
3. For sizes of items 6, 7, 8, 9 & 10, please refer to catalogue.
4. FTC will not be held liable if the erection of our water tanks are not made in accordance to the technical requirements of concrete foundation, steel footing and water tank assembly drawings.
5. Overflow shall be minimum twice the volume of inlet.
6. Overflow shall flow freely to the ground.
7. All tanks shall be electrically grounded.

#### CAUTIONS

#### GRP Panel Type Water Tanks

Seismic Load  $K_h=0.3G$

Tank size:	(6.39+0.32+3.11)x9.84x6.56 ft High.		
	(1.95+0.1+0.95)x3x2 m HIGH		
Volume:	18 m <sup>3</sup>	4,752 USG	Usable 1165-2500+
Bolts / Nuts:	S/S A4 - 316		
Insulation:	Non-Insulated		

Project Name:

Contractor:

Cougar USA

Consultant:

Done By:	JC	Reviewed by:	
		Verified by:	-

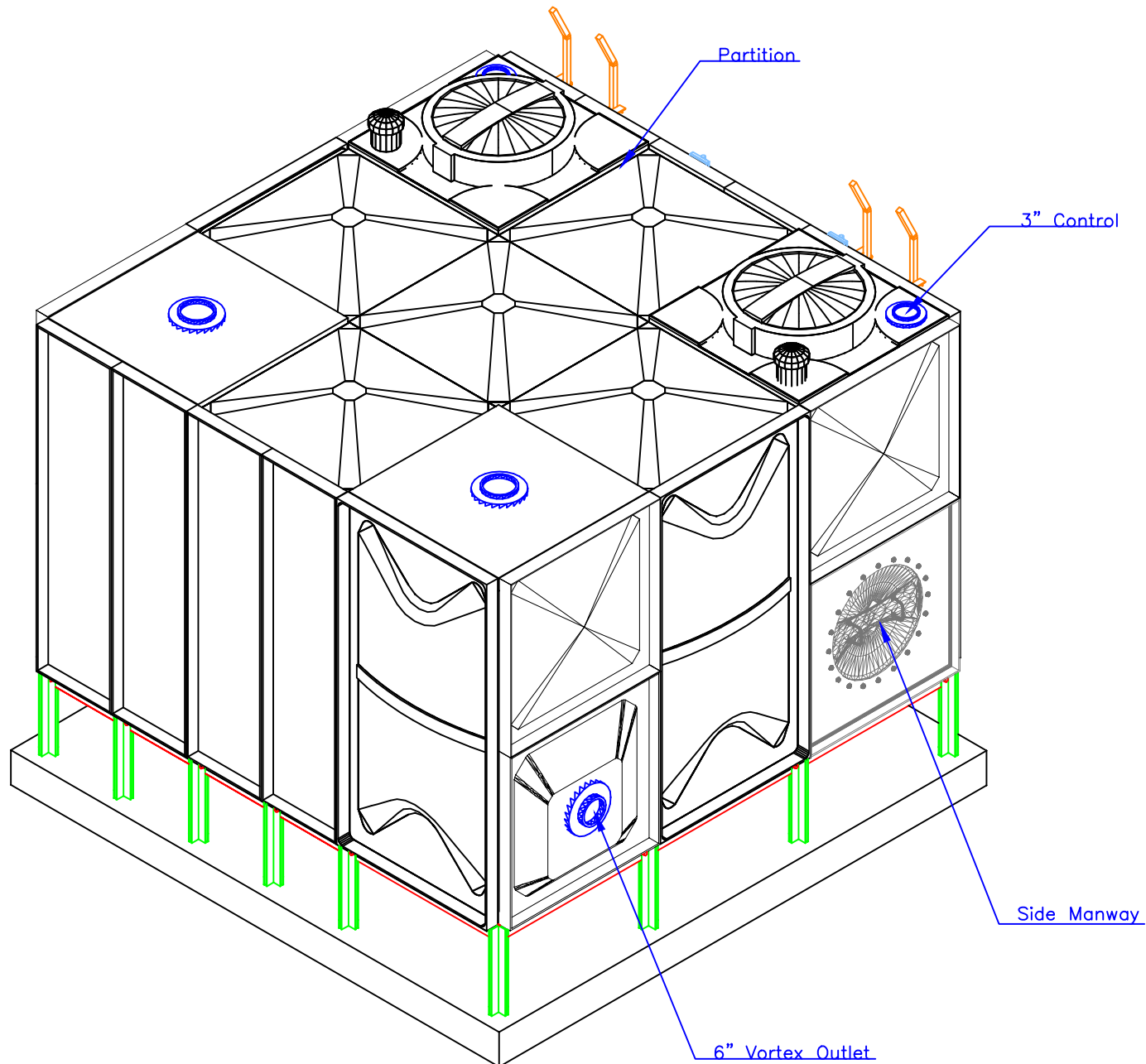
#### Revisions

No.	Issue Date	Description
0	29 Mar21	NEW

**FTC** FIBER TECHNOLOGY CORPORATION

Head Office:  
Lorton, Virginia, United States of America  
Regional Office:  
Jebel Ali Free Zone, Dubai, U.A.E.

Copyright Fiber Technology Corporation



TANK-AXONOMETRIC

TANK COMPONENTS				
No.	Description	Material	Qty	Remarks
1	Water tank	FRP	1	Colour GRAY
2	Manhole Cover	FRP	2	S/S Hinges & Locks
3	Internal Ladder	SS	2	Height : 2m
4	External Ladder	G.I.	2	Height : 2m
5	Air vent		2	Light & Insect Proof 4" Cowl Type
6	Flange	A	2	2" Connection Flange
		B	2	3" Connection Flange
		C	2	4" Connection Flange
		D	2	6" Connection Flange
		E	1	8" Connection Flange + Elbow UP
11	Water Level Indicator	-	2	Height : 2m BY OTHERS
12	Vortex Assembly	FRP	2	4' & 6' Anti Vortex Plate Assembly
13	Side Man Way	FRP	2	-

- NOTES:
- CAUTIONS
1.

2.

3.

4.

5.

6.

7.
- Allow a minimum space of 50 cm all around the tank's foundation.  
Maximum allowable deflection in concrete foundation = +/- 2mm.  
For sizes of items 6, 7, 8, 9 & 10, please refer to catalogue.  
FTC will not be held liable if the erection of our water tanks are not made in accordance to the technical requirements of concrete foundation, steel footing and water tank assembly drawings.  
Overflow shall be minimum twice the volume of inlet.  
Overflow shall flow freely to the ground.  
All tanks shall be electrically grounded.

GRP Panel Type Water Tanks			
Seismic Load Kh=0.3G			
Tank size:	(6.39+0.32+3.11)x9.84x6.56 ft High.		
	(1.95+0.1+0.95)x3x2 m HIGH		
Volume:	18 m <sup>3</sup>	4,752 USG	Usable 1165-2500+
Bolts / Nuts:	S/S A4 - 316		
Insulation:	Non-Insulated		

Project Name:

-

Contractor:

Cougar USA

Consultant:

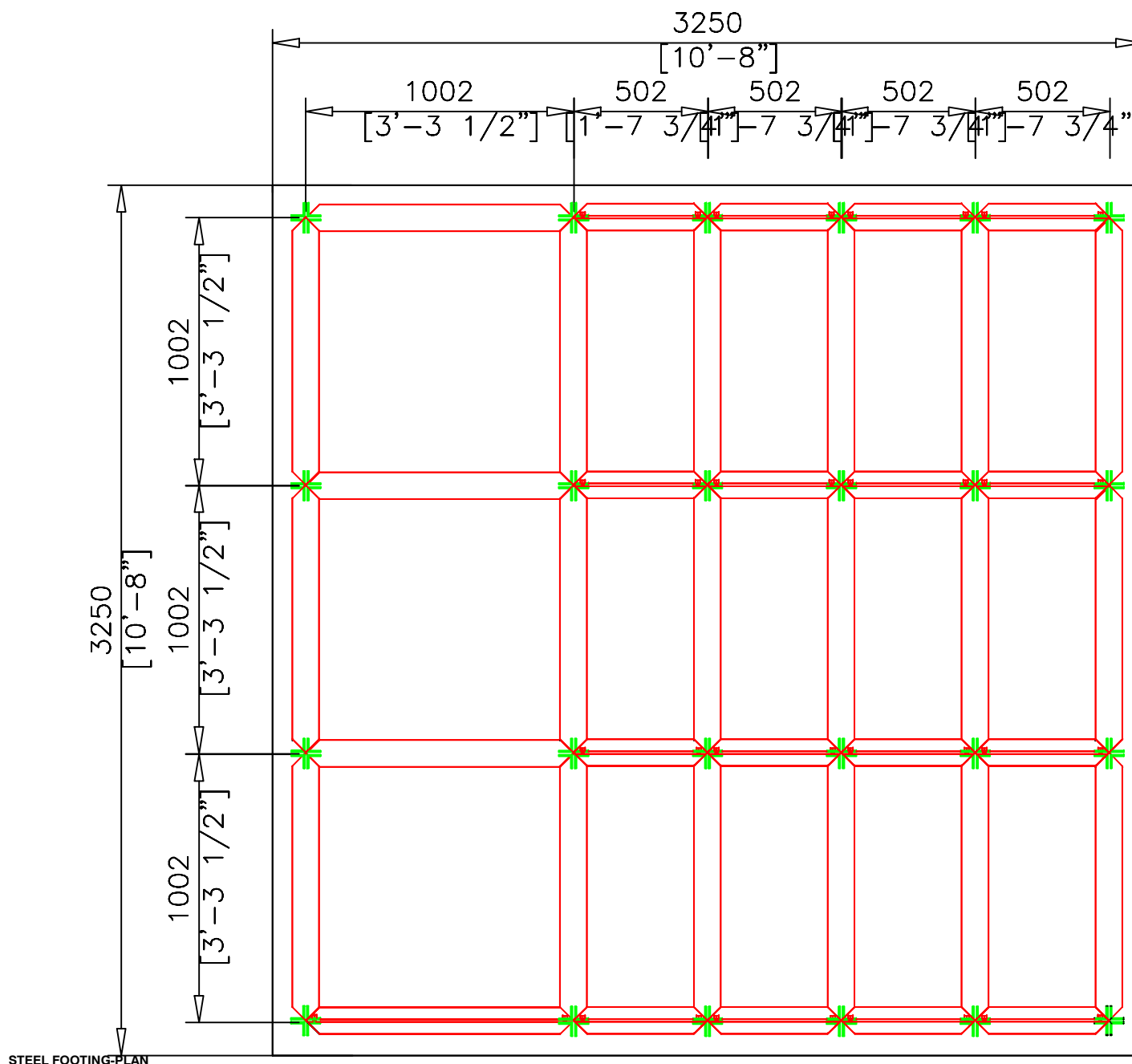
-

Done By:	JC	Reviewed by:	
		Verified by:	-
Revisions			
No.	Issue Date	Description	
0	29 Mar21	NEW	

FTC

FIBER TECHNOLOGY CORPORATION

Head Office:  
Lorton, Virginia, United States of America  
Regional Office:  
Jebel Ali Free Zone, Dubai, U.A.E.



TANK COMPONENTS				
No.	Description	Material	Qty	Remarks
1	Water tank	FRP	1	Colour GRAY
2	Manhole Cover	FRP	2	S/S Hinges & Locks
3	Internal Ladder	SS	2	Height : 2m
4	External Ladder	G.I.	2	Height : 2m
5	Air vent		2	Light & Insect Proof 4" Cowl Type
6	Flange	A	2	2" Connection Flange
		B	2	3" Connection Flange
		C	2	4" Connection Flange
		D	2	6" Connection Flange
		E	1	8" Connection Flange + Elbow UP
11	Water Level Indicator	-	2	Height : 2m BY OTHERS
12	Vortex Assembly	FRP	2	4' & 6' Anti Vortex Plate Assembly
13	Side Man Way	FRP	2	-

- NOTES:**
- Allow a minimum space of 50 cm all around the tank's foundation.
  - Maximum allowable deflection in concrete foundation = +/- 2mm.
  - For sizes of items 6, 7, 8, 9 & 10, please refer to catalogue.
  - FTC will not be held liable if the erection of our water tanks are not made in accordance to the technical requirements of concrete foundation, steel footing and water tank assembly drawings.
  - Overflow shall be minimum twice the volume of inlet.
  - Overflow shall flow freely to the ground.
  - All tanks shall be electrically grounded.

GRP Panel Type Water Tanks			
Seismic Load Kh=0.3G			
Tank size:		(6.39+0.32+3.11)x9.84x6.56 ft High. (1.95+0.1+0.95)x3x2 m HIGH	
Volume:	18 m <sup>3</sup>	4,752 USG	Usable 1165-2500+
Bolts / Nuts:	S/S A4 - 316		
Insulation:	Non-Insulated		

**Project Name:**

-

**Contractor:**

Cougar USA

**Consultant:**

-

Done By: JC Reviewed by:

Verified by: -

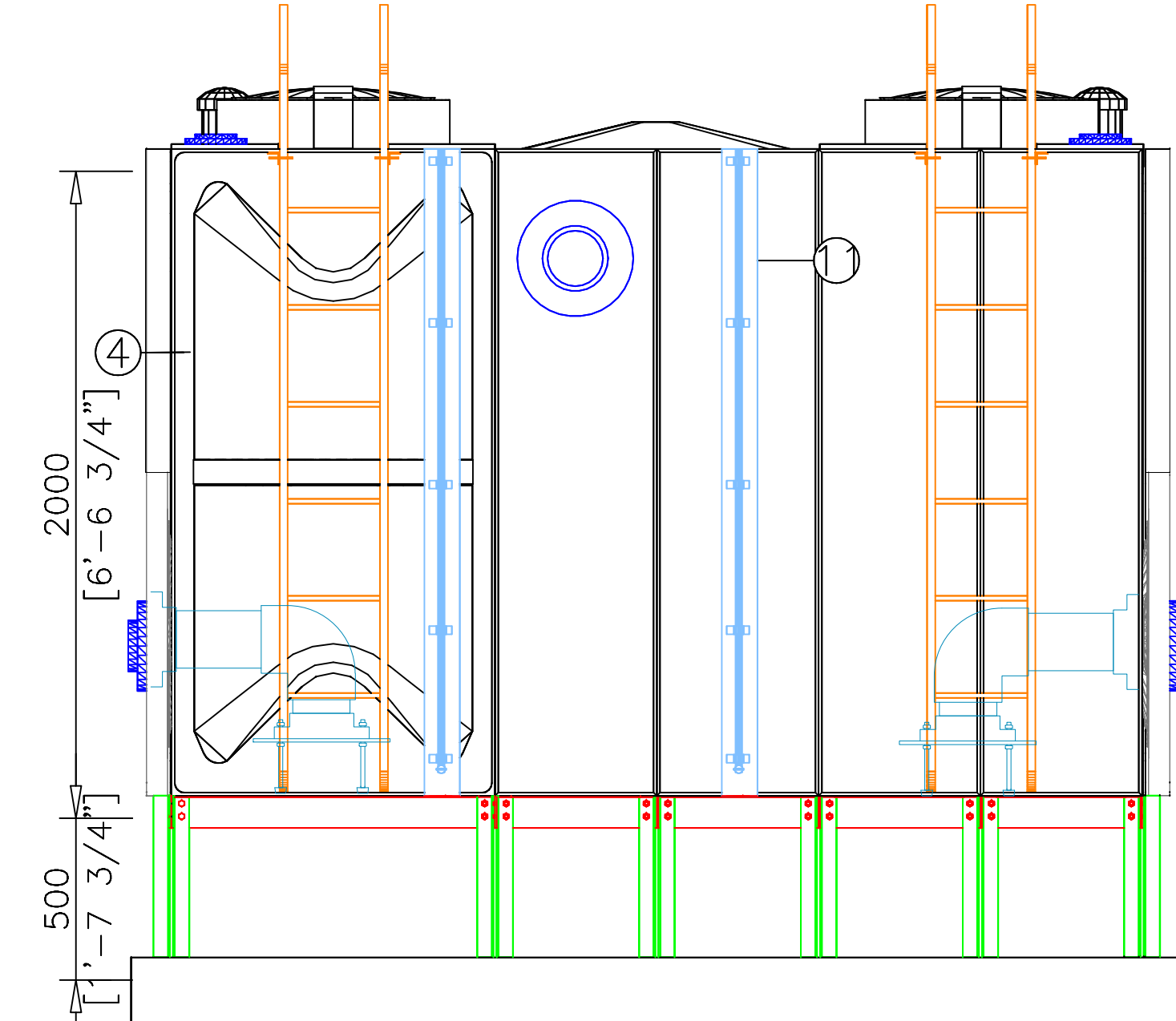
Revisions		
No.	Issue Date	Description
0	29 Mar21	NEW

**FTC** FIBER TECHNOLOGY CORPORATION

Head Office:  
Lorton, Virginia, United States of America

Regional Office:  
Jebel Ali Free Zone, Dubai, U.A.E.





FRONT ELEVATION

#### TANK COMPONENTS

No.	Description	Material	Qty	Remarks
1	Water tank	FRP	1	Colour GRAY
2	Manhole Cover	FRP	2	S/S Hinges & Locks
3	Internal Ladder	SS	2	Height : 2m
4	External Ladder	G.I.	2	Height : 2m
5	Air vent		2	Light & Insect Proof 4" Cow Type
6	Flange	A	2	2" Connection Flange
		B	2	3" Connection Flange
		C	2	4" Connection Flange
		D	2	6" Connection Flange
		E	1	8" Connection Flange + Elbow UP
11	Water Level Indicator	-	2	Height : 2m BY OTHERS
12	Vortex Assembly	FRP	2	4' & 6' Anti Vortex Plate Assembly
13	Side Man Way	FRP	2	-

#### NOTES:

- Allow a minimum space of 50 cm all around the tank's foundation.
- Maximum allowable deflection in concrete foundation = +/- 2mm.
- For sizes of items 6, 7, 8, 9 & 10, please refer to catalogue.
- FTC will not be held liable if the erection of our water tanks are not made in accordance to the technical requirements of concrete foundation, steel footing and water tank assembly drawings.
- Overflow shall be minimum twice the volume of inlet.
- Overflow shall flow freely to the ground.
- All tanks shall be electrically grounded.

#### CAUTIONS

#### GFRP Panel Type Water Tanks

Seismic Load  $K_h = 0.3G$

<b>Tank size:</b>	(6.39+0.32+3.11)x9.84x6.56 ft High. (1.95+0.1+0.95)x3x2 m HIGH		
<b>Volume:</b>	18 m <sup>3</sup>	4,752 USG	Usable 1165-2500+
<b>Bolts / Nuts:</b>	S/S A4 - 316		
<b>Insulation:</b>	Non-Insulated		

#### Project Name:

-

#### Contractor:

Cougar USA

#### Consultant:

-

Done By:	JC	Reviewed by:	
Verified by:			-

#### Revisions

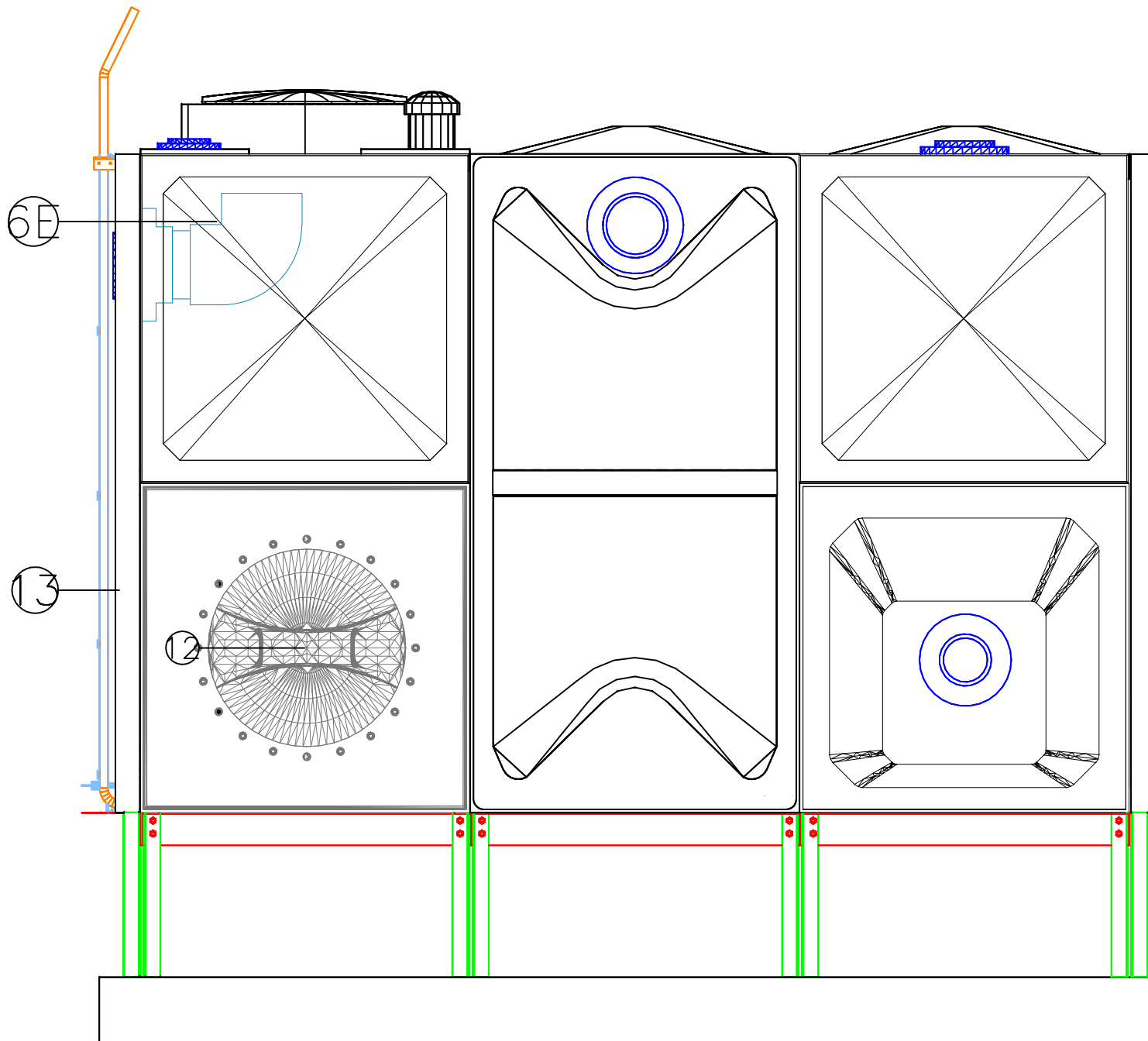
No.	Issue Date	Description
0	29 Mar21	NEW

**FTC** | **FIBER TECHNOLOGY CORPORATION**

Head Office:  
Lorton, Virginia, United States of America

Regional Office:  
Jebel Ali Free Zone, Dubai, U.A.E.

Copyright Fiber Technology Corporation



TANK-RIGHT ELEVATION

#### TANK COMPONENTS

No.	Description	Material	Qty	Remarks
1	Water tank	FRP	1	Colour GRAY
2	Manhole Cover	FRP	2	S/S Hinges & Locks
3	Internal Ladder	SS	2	Height : 2m
4	External Ladder	G.I.	2	Height : 2m
5	Air vent		2	Light & Insect Proof 4" Cow Type
6	Flange	A	2	2" Connection Flange
		B	2	6" Connection Flange
		C	2	4" Connection Flange
		D	3	6" Connection Flange
		E	1	8" Connection Flange + Elbow UP
11	Water Level Indicator	-	2	Height : 2m BY OTHERS
12	Vortex Assembly	FRP	2	4' & 6' Anti Vortex Plate Assembly
13	Side Man Way	FRP	2	-

#### NOTES:

- Allow a minimum space of 50 cm all around the tank's foundation.
- Maximum allowable deflection in concrete foundation = +/- 2mm.
- For sizes of items 6, 7, 8, 9 & 10, please refer to catalogue.
- FTC will not be held liable if the erection of our water tanks are not made in accordance to the technical requirements of concrete foundation, steel footing and water tank assembly drawings.
- Overflow shall be minimum twice the volume of inlet.
- Overflow shall flow freely to the ground.
- All tanks shall be electrically grounded.

#### CAUTIONS

#### GRP Panel Type Water Tanks

Seismic Load Kh=0.3G

**Tank size:** (6.39+0.32+3.11)x9.84x6.56 ft High.  
(1.95+0.1+0.95)x3x2 m HIGH

**Volume:** 18 m<sup>3</sup> 4,752 USG Usable 1165-2500+

**Bolts / Nuts:** S/S A4 - 316

**Insulation:** Non-Insulated

**Project Name:**

**Contractor:**

Cougar USA

**Consultant:**

Done By: JC

Reviewed by:

Verified by: -

#### Revisions

No.	Issue Date	Description
0	29 Mar21	NEW

**FTC** FIBER TECHNOLOGY CORPORATION

Head Office:  
Lorton, Virginia, United States of America

Regional Office:  
Jebel Ali Free Zone, Dubai, U.A.E.

Copyright Fiber Technology Corporation