

TANK-AXONOMETRIC

#### TANK COMPONENTS

No.	Description	Material	Qty	Remarks
1	Water tank	FRP	1	Colour GRAY
2	Manhole Cover	FRP	2	S/S Hinges & Locks
3	Internal Ladder	FRP/SS	2	Height : 2m
4	External Ladder	G.I.	2	Height : 2m
5	Air vent	PVC	2	Light & Insect Proof 4" Cow Type
6	Flanges	Class 150	2	4" SS 304 Connection Flange
		B	1	8" Overflow
		C	2	8" Steel Threaded Flange
		D	2	2" Steel Threaded Flange & 2" SS 304
		E	1	6" Overflow
		F	2	3" PVC Connection Flange
7	Water Level Indicator	C&M	2	Height : 2m
8	Vortex Assembly	FRP	2	4' & 6' Vortex plate Assembly
9	Side Man Way	FRP	2	-

#### NOTES:

1. Allow a minimum space of 50 cm all around the tank's foundation.
2. Maximum allowable deflection in concrete foundation = +/- 2mm.
3. For sizes of items 6, 7, 8, 9 & 10, please refer to catalogue.
4. FTC will not be held liable if the erection of our water tanks are not made in accordance to the technical requirements of concrete foundation, steel footing and water tank assembly drawings.
5. Overflow shall be minimum twice the volume of inlet.
6. Overflow shall flow freely to the ground.
7. All tanks shall be electrically grounded.

#### CAUTIONS

#### GRP Panel Type Water Tanks

Seismic Load  $K_h = 0.3G$

**Tank size:** (9.68+0.32+3.11)x6.56x8.2 ft High.  
(2.95+0.1+0.95)x2x2.5 m HIGH

**Volume:** 20 m<sup>3</sup> 5280 USG

**Bolts / Nuts:** S/S A4 - 316

**Insulation:** Non-Insulated

**Project Name:**

**Allied ISD  
Early Childhood Center**

**Contractor:**

**Cougar USA**

**Consultant:**

-

Done By: JC Reviewed by:  
Verified by: -

#### Revisions

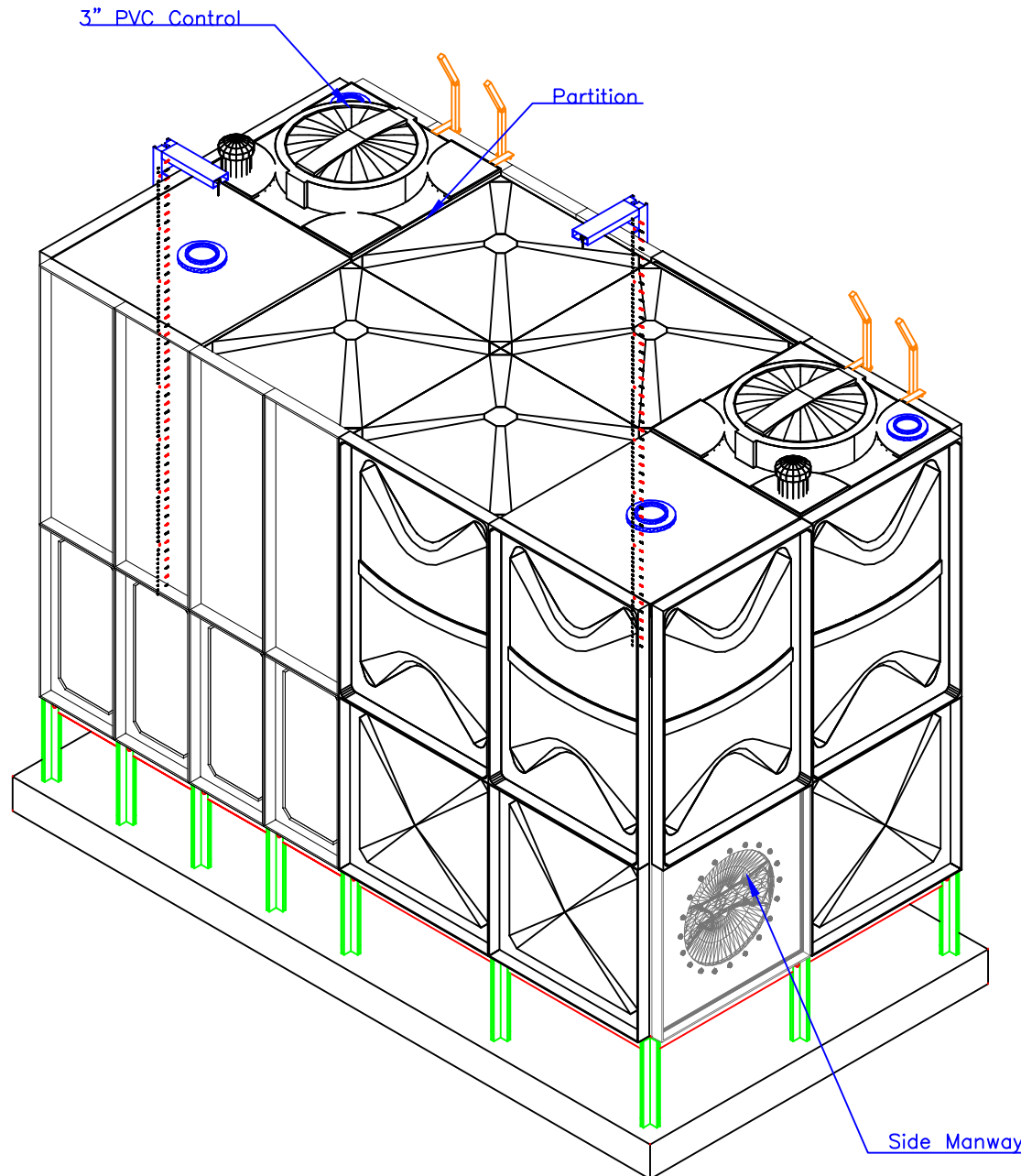
No.	Issue Date	Description
1	26Oct20	NEW

**FTC** FIBER TECHNOLOGY CORPORATION

Head Office:  
Lorton, Virginia, United States of America

Regional Office:  
Jebel Ali Free Zone, Dubai, U.A.E.

Copyright Fiber Technology Corporation



TANK-AXONOMETRIC

#### TANK COMPONENTS

No.	Description	Material	Qty	Remarks
1	Water tank	FRP	1	Colour GRAY
2	Manhole Cover	FRP	2	S/S Hinges & Locks
3	Internal Ladder	FRP/SS	2	Height : 2m
4	External Ladder	G.I.	2	Height : 2m
5	Air vent	PVC	2	Light & Insect Proof 4" Cow Type
6	Flanges	Class 150	2	4" SS 304 Connection Flange
		B	1	6" Overflow
		C	2	8" Steel Threaded Flange
		D	2	2" Steel Threaded Flange & 2" SS 304
		E	1	6" Overflow
		F	2	3" PVC Connection Flange
7	Water Level Indicator	C&M	2	Height : 2m
8	Vortex Assembly	FRP	2	4' & 6" Vortex plate Assembly
9	Side Man Way	FRP	2	-

#### NOTES:

1. Allow a minimum space of 50 cm all around the tank's foundation.
2. Maximum allowable deflection in concrete foundation = +/- 2mm.
3. For sizes of items 6, 7, 8, 9 & 10, please refer to catalogue.
4. FTC will not be held liable if the erection of our water tanks are not made in accordance to the technical requirements of concrete foundation, steel footing and water tank assembly drawings.
5. Overflow shall be minimum twice the volume of inlet.
6. Overflow shall flow freely to the ground.
7. All tanks shall be electrically grounded.

#### CAUTIONS

#### GRP Panel Type Water Tanks

Seismic Load  $K_h=0.3G$

**Tank size:** (9.68+0.32+3.11)x6.56x8.2 ft High.  
(2.95+0.1+0.95)x2x2.5 m HIGH

**Volume:** 20 m<sup>3</sup> 5280. USG

**Bolts / Nuts:** S/S A4 - 316

**Insulation:** Non-Insulated

#### Project Name:

**Allied ISD  
Early Childhood Center**

#### Contractor:

**Cougar USA**

#### Consultant:

-

Done By: JC

Reviewed by:

Verified by: -

#### Revisions

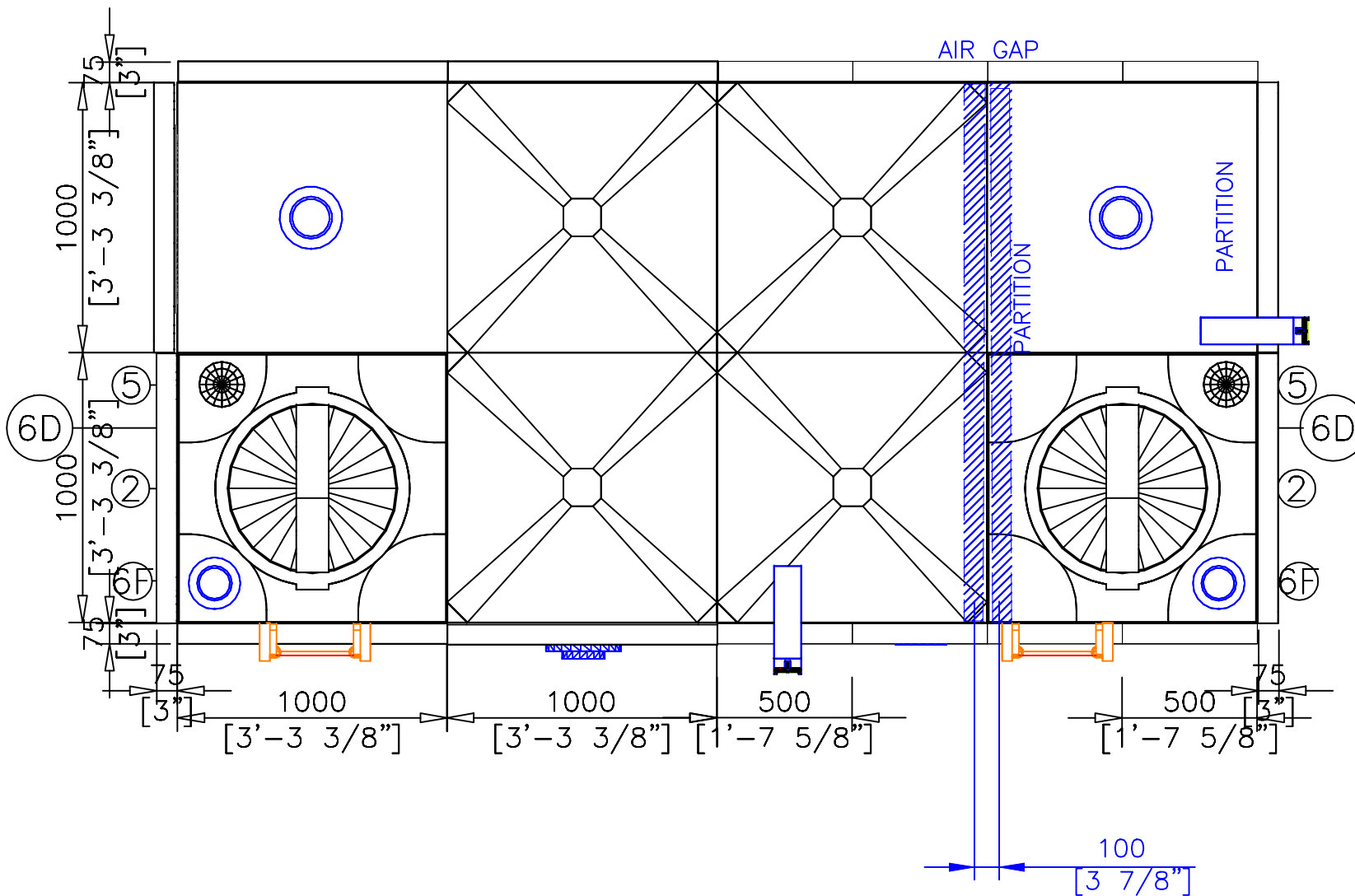
No.	Issue Date	Description
1	26Oct20	NEW

**FTC** FIBER TECHNOLOGY CORPORATION

Head Office:  
Lorton, Virginia, United States of America

Regional Office:  
Jebel Ali Free Zone, Dubai, U.A.E.





TANK-PLAN

TANK COMPONENTS				
No.	Description	Material	Qty	Remarks
1	Water tank	FRP	1	Colour GRAY
2	Manhole Cover	FRP	2	S/S Hinges & Locks
3	Internal Ladder	FRP/SS	2	Height : 2m
4	External Ladder	G.I.	2	Height : 2m
5	Air vent	PVC	2	Light & Insect Proof 4" Cow Type
6	Flanges	Class 150	2	4" SS 304 Connection Flange
		B	1	8" Overflow
		C	2	8" Steel Threaded Flange
		D	2	2" Steel Threaded Flange & 2" SS 304
		E	1	6" Overflow
		F	2	3" PVC Connection Flange
7	Water Level Indicator	C&M	2	Height : 2m
8	Vortex Assembly	FRP	2	4' & 6" Vortex plate Assembly
9	Side Man Way	FRP	2	-

NOTES:	
1.	Allow a minimum space of 50 cm all around the tank's foundation.
2.	Maximum allowable deflection in concrete foundation = +/- 2mm.
3.	For sizes of items 6, 7, 8, 9 & 10, please refer to catalogue.
4.	FTC will not be held liable if the erection of our water tanks are not made in accordance to the technical requirements of concrete foundation, steel footing and water tank assembly drawings.
5.	Overflow shall be minimum twice the volume of inlet.
6.	Overflow shall flow freely to the ground.
7.	All tanks shall be electrically grounded.

GRP Panel Type Water Tanks	
Seismic Load Kh=0.3G	
Tank size:	(9.68+0.32+3.11)x6.56x8.2 ft High. (2.95+0.1+0.95)x2x2.5 m HIGH
Volume:	20 m <sup>3</sup> 5280 USG
Bolts / Nuts:	S/S A4 - 316
Insulation:	Non-Insulated

Project Name:	<p> <b>Allied ISD</b>  <b>Early Childhood Center</b> </p>
---------------	---

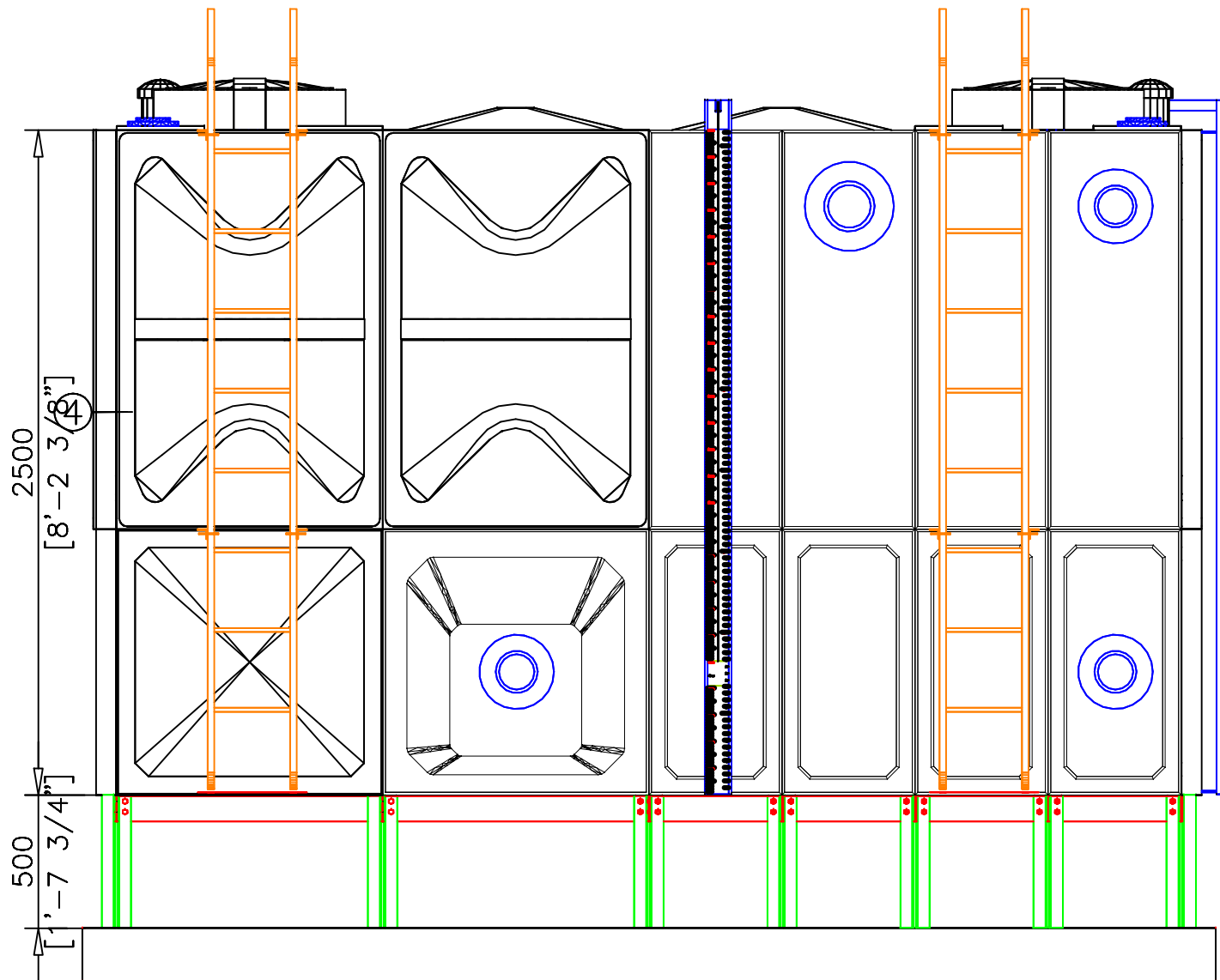
Contractor:	<p> <b>Cougar USA</b> </p>
-------------	----------------------------

Consultant:	-
-------------	---

Done By:	JC	Reviewed by:	
		Verified by:	-

Revisions		
No.	Issue Date	Description
1	26Oct20	NEW

<p> <b>FTC</b>   <b>FIBER TECHNOLOGY CORPORATION</b>            Head Office:  <b>Lorton, Virginia, United States of America</b>            Regional Office:  <b>Jebel Ali Free Zone, Dubai, U.A.E.</b> </p>
---



FRONT ELEVATION

#### TANK COMPONENTS

No.	Description	Material	Qty	Remarks
1	Water tank	FRP	1	Colour GRAY
2	Manhole Cover	FRP	2	S/S Hinges & Locks
3	Internal Ladder	FRP/SS	2	Height : 2m
4	External Ladder	G.I.	2	Height : 2m
5	Air vent	PVC	2	Light & Insect Proof 4" Cow Type
6	Flanges	Class 150	2	4" SS 304 Connection Flange
		B	1	6" Overflow
		C	2	8" Steel Threaded Flange
		D	2	2" Steel Threaded Flange & 2" SS 304
		E	1	6" Overflow
		F	2	3" PVC Connection Flange
7	Water Level Indicator	C&M	2	Height : 2m
8	Vortex Assembly	FRP	2	4' & 6' Vortex plate Assembly
9	Side Man Way	FRP	2	-

#### NOTES:

1. Allow a minimum space of 50 cm all around the tank's foundation.
2. Maximum allowable deflection in concrete foundation = +/- 2mm.
3. For sizes of items 6, 7, 8, 9 & 10, please refer to catalogue.
4. FTC will not be held liable if the erection of our water tanks are not made in accordance to the technical requirements of concrete foundation, steel footing and water tank assembly drawings.
5. Overflow shall be minimum twice the volume of inlet.
6. Overflow shall flow freely to the ground.
7. All tanks shall be electrically grounded.

#### CAUTIONS

#### GRP Panel Type Water Tanks

Seismic Load Kh=0.3G

**Tank size:** (9.68+0.32+3.11)x6.56x8.2 ft High.  
(2.95+0.1+0.95)x2x2.5 m HIGH

**Volume:** 20 m<sup>3</sup> 5280 USG

**Bolts / Nuts:** S/S A4 - 316

**Insulation:** Non-Insulated

**Project Name:**

**Allied ISD  
Early Childhood Center**

**Contractor:**

**Cougar USA**

**Consultant:**

-

Done By: JC Reviewed by:  
Verified by: -

#### Revisions

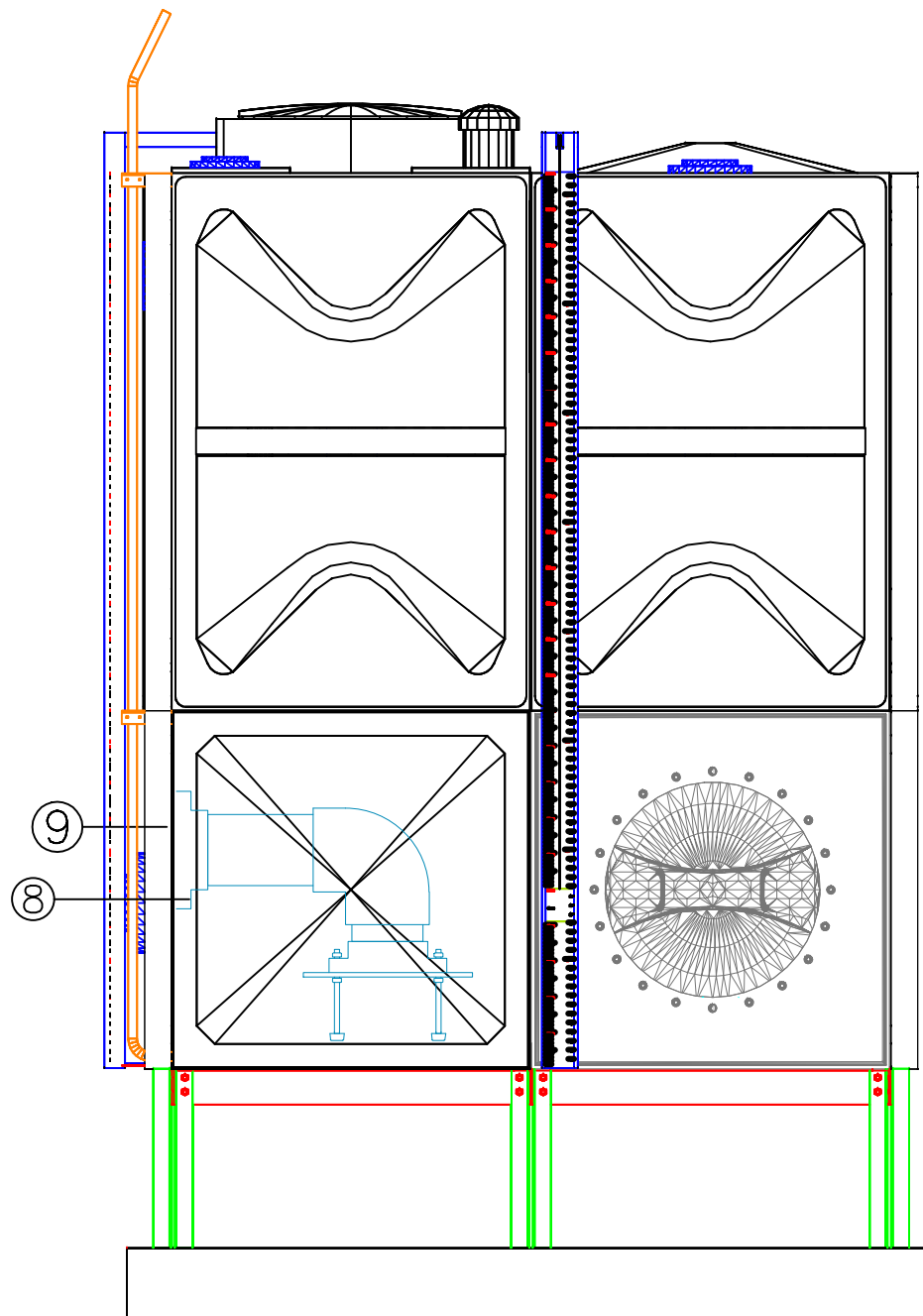
No.	Issue Date	Description
1	26Oct20	NEW

**FTC** FIBER TECHNOLOGY CORPORATION

Head Office:  
Lorton, Virginia, United States of America

Regional Office:  
Jebel Ali Free Zone, Dubai, U.A.E.

Copyright Fiber Technology Corporation



TANK-RIGHT ELEVATION

# TANK COMPONENTS

No.	Description	Material	Qty	Remarks
1	Water tank	FRP	1	Colour GRAY
2	Manhole Cover	FRP	2	S/S Hinges & Locks
3	Internal Ladder	FRP/SS	2	Height : 2m
4	External Ladder	G.I.	2	Height : 2m
5	Air vent	PVC	2	Light & Insect Proof 4" Cow Type
6	Flanges	Class 150	2	4" SS 304 Connection Flange
		B	1	6" Overflow
		C	2	8" Steel Threaded Flange
		D	2	2" Steel Threaded Flange & 2" SS 304
		E	1	6" Overflow
		F	2	3" PVC Connection Flange
7	Water Level Indicator	C&M	2	Height : 2m
8	Vortex Assembly	FRP	2	4' & 6' Vortex plate Assembly
9	Side Man Way	FRP	2	-

## NOTES:

- Allow a minimum space of 50 cm all around the tank's foundation.
- Maximum allowable deflection in concrete foundation = +/- 2mm.
- For sizes of items 6, 7, 8, 9 & 10, please refer to catalogue.
- FTC will not be held liable if the erection of our water tanks are not made in accordance to the technical requirements of concrete foundation, steel footing and water tank assembly drawings.
- Overflow shall be minimum twice the volume of inlet.
- Overflow shall flow freely to the ground.
- All tanks shall be electrically grounded.

## CAUTIONS

### GRP Panel Type Water Tanks

Seismic Load Kh=0.3G

**Tank size:** (9.68+0.32+3.11)x6.56x8.2 ft High.  
(2.95+0.1+0.95)x2x2.5 m HIGH

**Volume:** 20 m<sup>3</sup> 5280. USG

**Bolts / Nuts:** S/S A4 - 316

**Insulation:** Non-Insulated

**Project Name:**

**Allied ISD  
Early Childhood Center**

**Contractor:**

**Cougar USA**

**Consultant:**

-

Done By: JC

Reviewed by:

Verified by: -

## Revisions

No.	Issue Date	Description
1	26Oct20	NEW

**FTC** FIBER TECHNOLOGY CORPORATION

Head Office:  
Lorton, Virginia, United States of America

Regional Office:  
Jebel Ali Free Zone, Dubai, U.A.E.