

TANK-AXONOMETRIC

TANK COMPONENTS				
No.	Description	Material	Qty	Remarks
1	Water tank	FRP	1	Colour GRAY
2	Manhole Cover	FRP	2	S/S Hinges & Locks
3	Internal Ladder	SS	2	Height : 2.5m
4	External Ladder	G.I.	2	Height : 2.5m
5	Air vent	PVC	2	Light & Insect Proof 4" Cow Type
6	Flanges	B	1	6" Connection Flange
		C	2	6" Connection Flange
		D	2	2" Connection Flange
		E	2	4" Connection Flange
		F	3	3" PVC Connection Flange
7	Water Level Indicator	C&M	2	Height : 2.5m
8	Vortex Assembly	FRP	2	4" & 6" Vortex plate Assembly
9	Side Man Way	FRP	2	-
10	Internal Elbow Assembly	PVC	2	4" & 6" Elbow up Overflow

NOTES:

CAUTIONS

- Allow a minimum space of 50 cm all around the tank's foundation.
- Maximum allowable deflection in concrete foundation = +/- 2mm.
- For sizes of items 6, 7, 8, 9 & 10, please refer to catalogue.
- FTC will not be held liable if the erection of our water tanks are not made in accordance to the technical requirements of concrete foundation, steel footing and water tank assembly drawings.
- Overflow shall be minimum twice the volume of inlet.
- Overflow shall flow freely to the ground.
- All tanks shall be electrically grounded.

GRP Panel Type Water Tanks			
Seismic Load Kh=0.3G			
Tank size:	(8+0.32+3.11)x8.2x8.2 ft High. (2.45+0.1+0.95)x2.5x2.5 m HIGH		
Volume:	21.875 m ³	5,775 USG	3,500+ / 1,000+ Usable USG
Bolts / Nuts:	S/S A4 - 316		
Insulation:	Non-Insulated		

Project Name:

Rice Student Center

Contractor:

Cougar USA

Consultant:

-

Done By:	JC	Reviewed by:	
		Verified by:	-

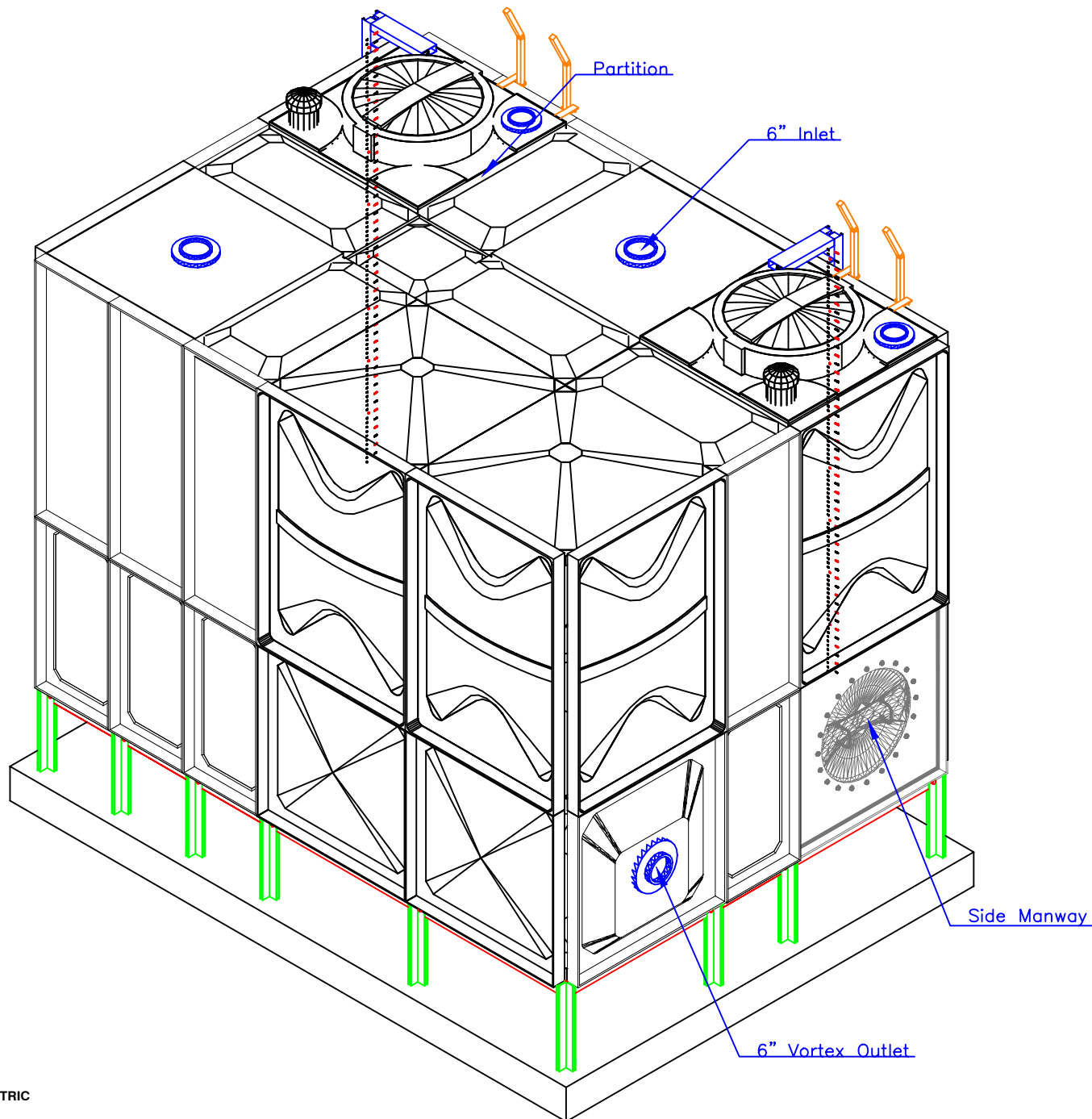
Revisions		
No.	Issue Date	Description
0	06Aug'21	NEW

FTC FIBER TECHNOLOGY CORPORATION

Head Office:
Lorton, Virginia, United States of America

Regional Office:
Jebel Ali Free Zone, Dubai, U.A.E.

Copyright Fiber Technology Corporation



TANK-AXONOMETRIC

TANK COMPONENTS

No.	Description	Material	Qty	Remarks
1	Water tank	FRP	1	Colour GRAY
2	Manhole Cover	FRP	2	S/S Hinges & Locks
3	Internal Ladder	SS	2	Height : 2.5m
4	External Ladder	G.I.	2	Height : 2.5m
5	Air vent	PVC	2	Light & Insect Proof 4" Cow Type
6	Flanges	B	1	6" Connection Flange
		C	2	6" Connection Flange
		D	2	2" Connection Flange
		E	2	4" Connection Flange
		F	3	3" PVC Connection Flange
7	Water Level Indicator	C&M	2	Height : 2.5m
8	Vortex Assembly	FRP	2	4' & 6' Vortex plate Assembly
9	Side Man Way	FRP	2	-
10	Internal Elbow Assembly	PVC	2	4' & 6' Elbow up Overflow

NOTES:

1. Allow a minimum space of 50 cm all around the tank's foundation.
2. Maximum allowable deflection in concrete foundation = +/- 2mm.
3. For sizes of items 6, 7, 8, 9 & 10, please refer to catalogue.
4. FTC will not be held liable if the erection of our water tanks are not made in accordance to the technical requirements of concrete foundation, steel footing and water tank assembly drawings.
5. Overflow shall be minimum twice the volume of inlet.
6. Overflow shall flow freely to the ground.
7. All tanks shall be electrically grounded.

CAUTIONS

GRP Panel Type Water Tanks

Seismic Load $K_h = 0.3G$

Tank size: $(8+0.32+3.11) \times 8.2 \times 8.2$ ft High.
 $(2.45+0.1+0.95) \times 2.5 \times 2.5$ m HIGH

Volume: 21.875 m³ 5,775 USG 3,500+ / 1,000+ Usable USG

Bolts / Nuts: S/S A4 - 316

Insulation: Non-Insulated

Project Name:

Rice Student Center

Contractor:

Cougar USA

Consultant:

-

Done By: JC

Reviewed by:

Verified by: -

Revisions

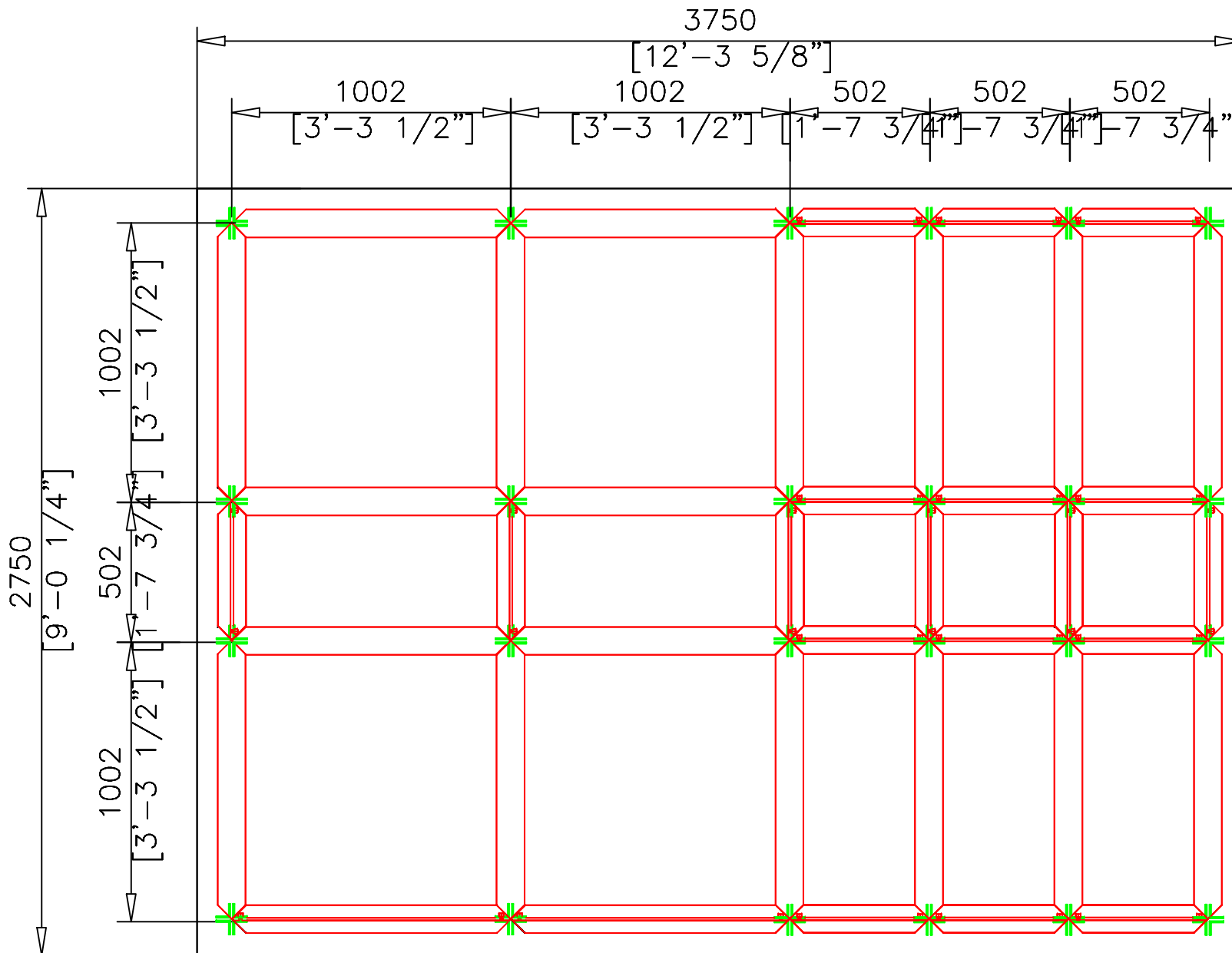
No.	Issue Date	Description
0	06Aug'21	NEW

FTC FIBER TECHNOLOGY CORPORATION

Head Office:
Lorton, Virginia, United States of America

Regional Office:
Jebel Ali Free Zone, Dubai, U.A.E.

Copyright Fiber Technology Corporation



STEEL FOOTING-PLAN

TANK COMPONENTS

No.	Description	Material	Qty	Remarks
1	Water tank	FRP	1	Colour GRAY
2	Manhole Cover	FRP	2	S/S Hinges & Locks
3	Internal Ladder	SS	2	Height : 2.5m
4	External Ladder	G.I.	2	Height : 2.5m
5	Air vent	PVC	2	Light & Insect Proof 4" Cowl Type
6	Flanges	B	1	6" Connection Flange
		C	2	6" Connection Flange
		D	2	2" Connection Flange
		E	2	4" Connection Flange
		F	3	3" PVC Connection Flange
7	Water Level Indicator	C&M	2	Height : 2.5m
8	Vortex Assembly	FRP	2	4" & 6" Vortex plate Assembly
9	Side Man Way	FRP	2	-
10	Internal Elbow Assembly	PVC	2	4" & 6" Elbow up Overflow

NOTES:

1. Allow a minimum space of 50 cm all around the tank's foundation.
2. Maximum allowable deflection in concrete foundation = +/- 2mm.
3. For sizes of items 6, 7, 8, 9 & 10, please refer to catalogue.
4. FTC will not be held liable if the erection of our water tanks are not made in accordance to the technical requirements of concrete foundation, steel footing and water tank assembly drawings.
5. Overflow shall be minimum twice the volume of inlet.
6. Overflow shall flow freely to the ground.
7. All tanks shall be electrically grounded.

CAUTIONS

GRP Panel Type Water Tanks

Seismic Load $K_h = 0.3G$

Tank size:	(8+0.32+3.11)x8.2x8.2 ft High. (2.45+0.1+0.95)x2.5x2.5 m HIGH		
Volume:	21.875 m ³	5,775 USG	3,500+ / 1,000+ Usable USG
Bolts / Nuts:	S/S A4 - 316		
Insulation:	Non-Insulated		

Project Name:

Rice Student Center

Contractor:

Cougar USA

Consultant:

-

Done By:	JC	Reviewed by:	
		Verified by:	-

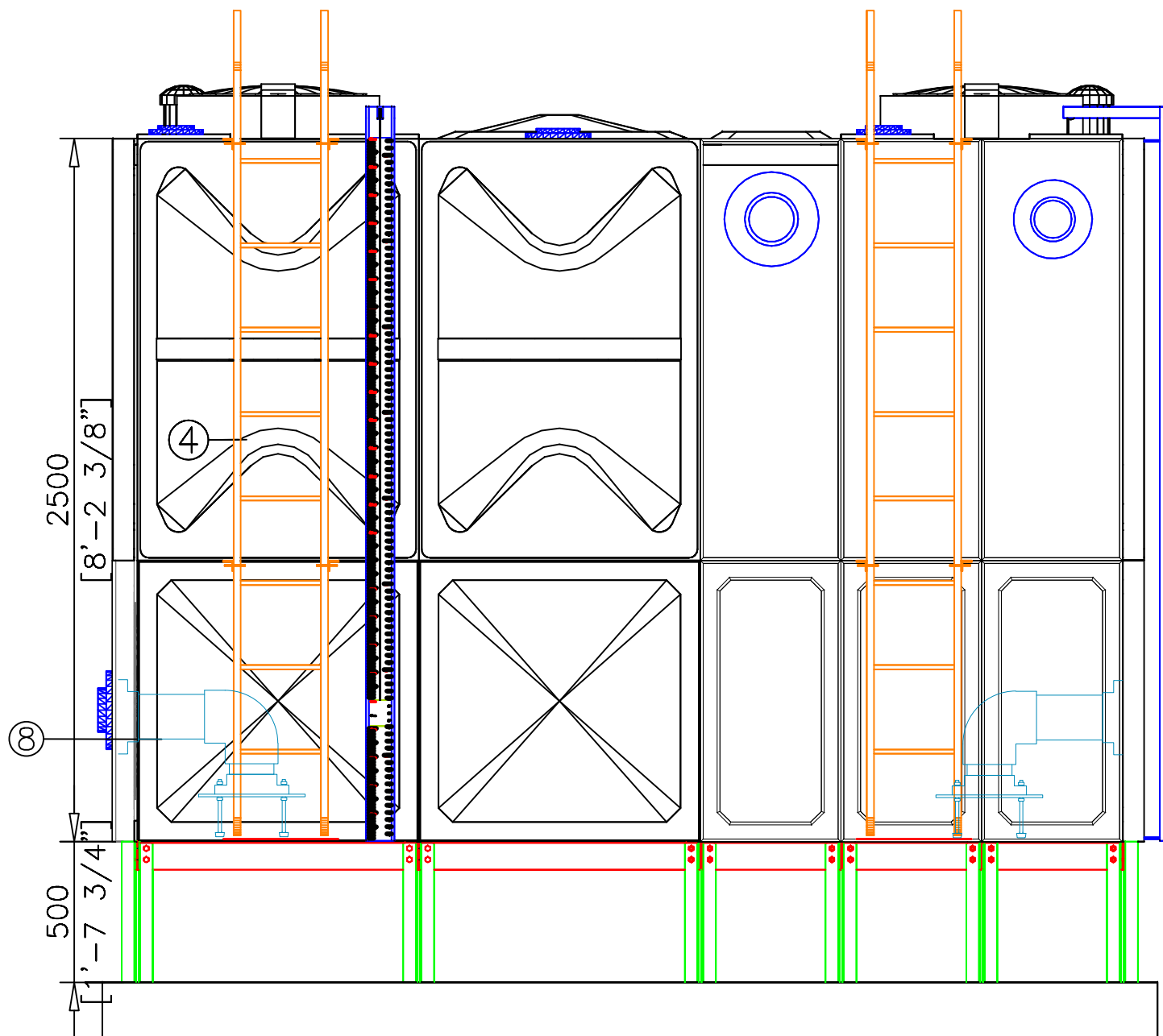
Revisions

No.	Issue Date	Description
0	06Aug'21	NEW

FTC FIBER TECHNOLOGY CORPORATION

Head Office:
Lorton, Virginia, United States of America

Regional Office:
Jebel Ali Free Zone, Dubai, U.A.E.



FRONT ELEVATION

TANK COMPONENTS

No.	Description	Material	Qty	Remarks
1	Water tank	FRP	1	Colour GRAY
2	Manhole Cover	FRP	2	S/S Hinges & Locks
3	Internal Ladder	SS	2	Height : 2.5m
4	External Ladder	G.I.	2	Height : 2.5m
5	Air vent	PVC	2	Light & Insect Proof 4" Cow Type
6	Flanges	B	1	6" Connection Flange
		C	2	6" Connection Flange
		D	2	2" Connection Flange
		E	2	4" Connection Flange
		F	3	3" PVC Connection Flange
7	Water Level Indicator	C&M	2	Height : 2.5m
8	Vortex Assembly	FRP	2	4" & 6" Vortex plate Assembly
9	Side Man Way	FRP	2	-
10	Internal Elbow Assembly	PVC	2	4" & 6" Elbow up Overflow

NOTES:

1. Allow a minimum space of 50 cm all around the tank's foundation.
2. Maximum allowable deflection in concrete foundation = +/- 2mm.
3. For sizes of items 6, 7, 8, 9 & 10, please refer to catalogue.
4. FTC will not be held liable if the erection of our water tanks are not made in accordance to the technical requirements of concrete foundation, steel footing and water tank assembly drawings.
5. Overflow shall be minimum twice the volume of inlet.
6. Overflow shall flow freely to the ground.
7. All tanks shall be electrically grounded.

CAUTIONS

GRP Panel Type Water Tanks

Seismic Load Kh=0.3G

Tank size:	(8+0.32+3.11)x8.2x8.2 ft High. (2.45+0.1+0.95)x2.5x2.5 m HIGH		
Volume:	21.875 m ³	5,775 USG	3,500+ / 1,000+ Usable USG
Bolts / Nuts:	S/S A4 - 316		
Insulation:	Non-Insulated		

Project Name:

Rice Student Center

Contractor:

Cougar USA

Consultant:

-

Done By:	JC	Reviewed by:	
		Verified by:	-

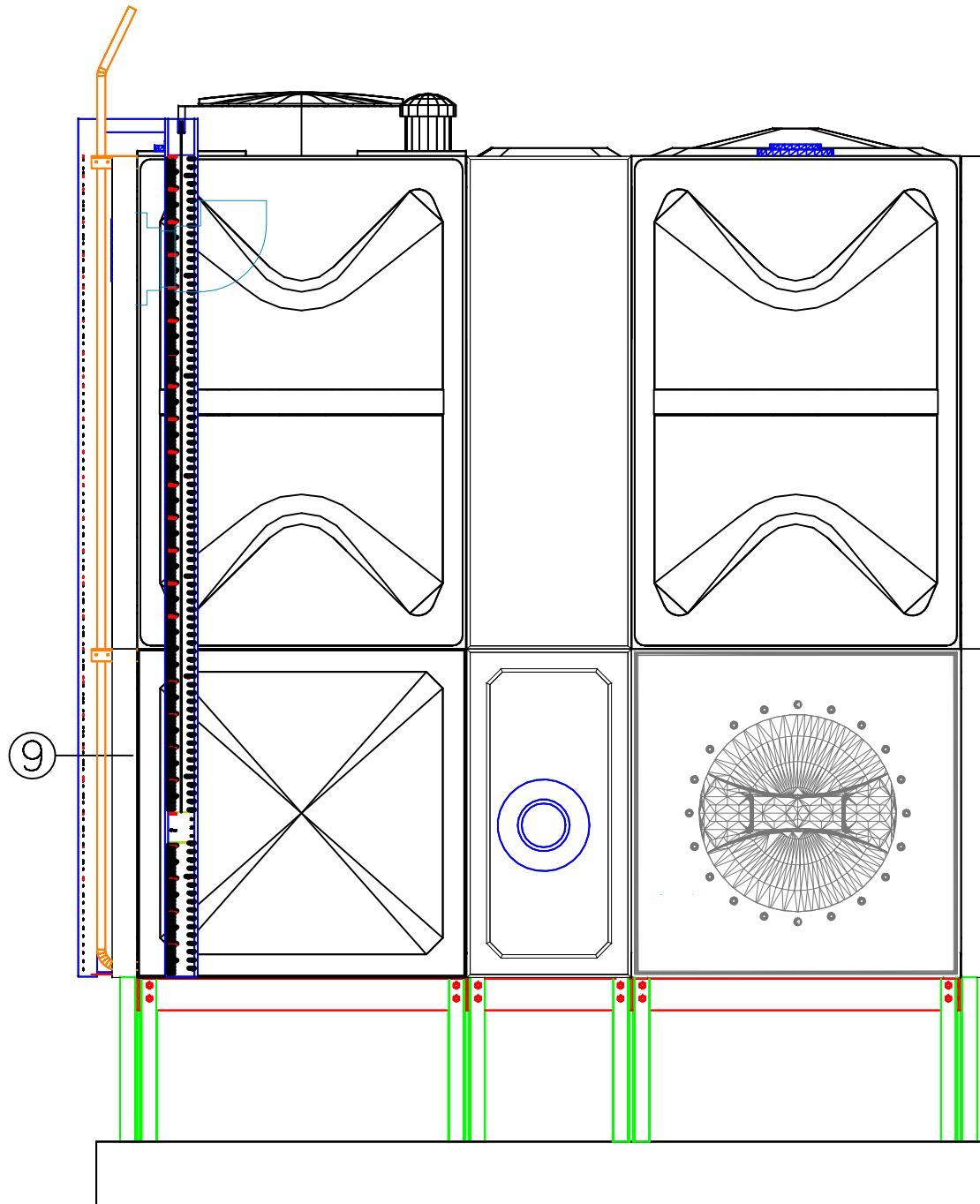
Revisions

No.	Issue Date	Description
0	06Aug'21	NEW

FTC FIBER TECHNOLOGY CORPORATION

Head Office:
Lorton, Virginia, United States of America

Regional Office:
Jebel Ali Free Zone, Dubai, U.A.E.



TANK-RIGHT ELEVATION

TANK COMPONENTS

No.	Description	Material	Qty	Remarks
1	Water tank	FRP	1	Colour GRAY
2	Manhole Cover	FRP	2	S/S Hinges & Locks
3	Internal Ladder	SS	2	Height : 2.5m
4	External Ladder	G.I.	2	Height : 2.5m
5	Air vent	PVC	2	Light & Insect Proof 4" Cow Type
6	Flanges	B	1	6" Connection Flange
		C	2	6" Connection Flange
		D	2	2" Connection Flange
		E	2	4" Connection Flange
		F	3	3" PVC Connection Flange
7	Water Level Indicator	C&M	2	Height : 2.5m
8	Vortex Assembly	FRP	2	4" & 6" Vortex plate Assembly
9	Side Man Way	FRP	2	-
10	Internal Elbow Assembly	PVC	2	4" & 6" Elbow up Overflow

NOTES:

- Allow a minimum space of 50 cm all around the tank's foundation.
- Maximum allowable deflection in concrete foundation = +/- 2mm.
- For sizes of items 6, 7, 8, 9 & 10, please refer to catalogue.
- FTC will not be held liable if the erection of our water tanks are not made in accordance to the technical requirements of concrete foundation, steel footing and water tank assembly drawings.
- Overflow shall be minimum twice the volume of inlet.
- Overflow shall flow freely to the ground.
- All tanks shall be electrically grounded.

CAUTIONS

GRP Panel Type Water Tanks

Seismic Load Kh=0.3G

Tank size:	(8+0.32+3.11)x8.2x8.2 ft High. (2.45+0.1+0.95)x2.5x2.5 m HIGH		
Volume:	21.875 m ³	5,775 USG	3,500+ / 1,000+ Usable USG
Bolts / Nuts:	S/S A4 - 316		
Insulation:	Non-Insulated		

Project Name:

Rice Student Center

Contractor:

Cougar USA

Consultant:

-

Done By:	JC	Reviewed by:	
		Verified by:	-

Revisions

No.	Issue Date	Description
0	06Aug'21	NEW

FTC FIBER TECHNOLOGY CORPORATION

Head Office:
Lorton, Virginia, United States of America

Regional Office:
Jebel Ali Free Zone, Dubai, U.A.E.